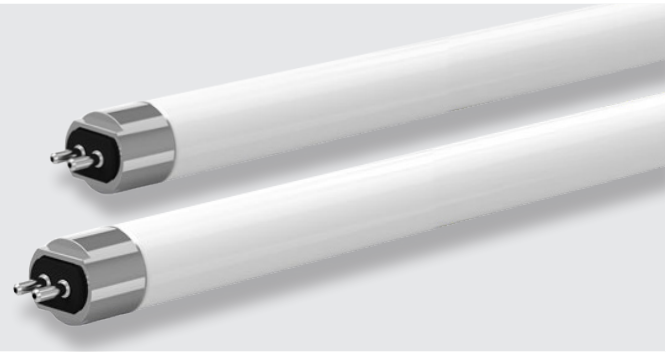


Project Name:	Notes:	Date:	Type:
---------------	--------	-------	-------

DESCRIPTION

Our 4-foot T5 Type A (direct-wire) glass tube is perfect for retrofitting existing fluorescent lamps for more energy savings. Available in 24W, and are double-ended for wiring.

Ideal use for office spaces, warehouses, hotels, restaurants, and schools.



CONSTRUCTION

Made of high-quality glass. Standard frosted lens (clear lens available with custom order). 100% Mercury Free and 100% Lead Free.

ELECTRICAL

T5 Type A—(direct-wire). For use with double-ended wiring schemes.

RETROFIT EASILY

If fixture uses a ballast, simply plug-in the Type A tube. Produces uniform light output that is consistent from end-to-end.

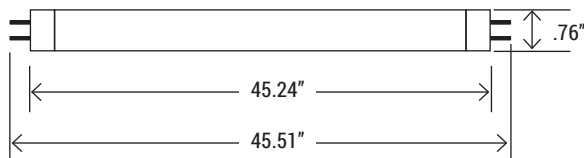
DIMMING

Non-dimmable.

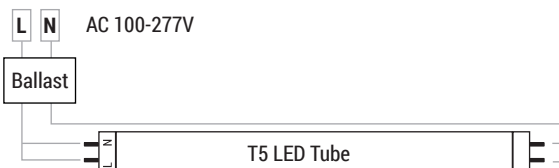
LISTING

UL Listed, FCC, RoHS, CE

DIMENSION



WIRING DIAGRAM



TECHNICAL SPECIFICATION

WATTAGE	24W
LUMENS	3,608 lumens / 3,629 lumens
EFFICACY	up to 135 lm/W
VOLTAGE	120V-277V
POWER FREQUENCY	50/60 Hz
CCT	4000K / 5000K
CRI	80+
BEAM ANGLE	180°
LENS TYPE	Frosted
WORKING TEMP.	-4°F - +131°F
STORAGE TEMP.	-40°F - +140°F
IP RATING	IP20
DIMMABLE	Non-dimmable
POWER FACTOR	>0.9
THD	5.8%
WARRANTY	5 year limited



MODEL NUMBER(S)								
MODEL#	WATTS	LUMENS	LM/WATT	CCT	CRI	LENS	VOLTAGE	PORTOR CAT#
NT5-EQ4-24N-00	24W	3,608	134	4000K	80+	Frosted	120V-277V	PT-T5-4FA-24W- 4K-F
NT5-EQ4-24R-00		3,629	135	5000K				PT-T5-4FA-24W- 5K-F