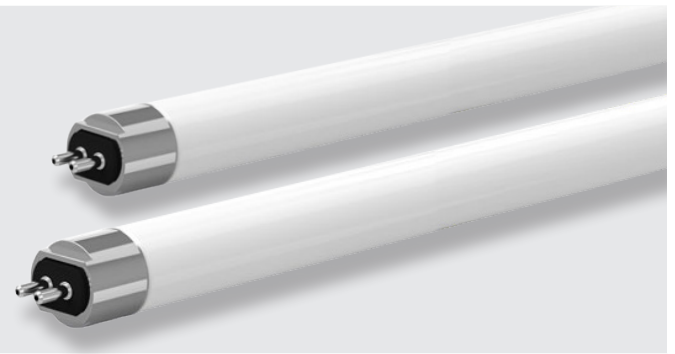


Project Name:	Notes:	Date:	Type:
---------------	--------	-------	-------

DESCRIPTION

Our 4-foot T5 Type B (ballast bypass) glass tube is perfect for retrofitting existing fluorescent lamps for more energy savings. Available in 25W, and are double-ended for wiring.

Ideal use for office spaces, warehouses, hotels, restaurants, and schools.



CONSTRUCTION

Made of high-quality glass. Standard frosted lens (clear lens available with custom order). 100% Mercury Free and 100% Lead Free.

ELECTRICAL

T5 Type B—(ballast removal) AC line input. For use with double-ended wiring schemes.

RETROFIT EASILY

Bypass the ballast with easy 4' LED T5 tube retrofit. Produces uniform light output that is consistent from end-to-end.

DIMMING

Non-dimmable and not compatible with ballast.

CERTIFICATION

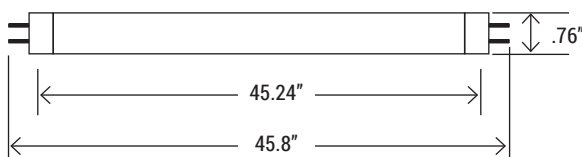
ETL Listed, FCC, RoHS, CE

TECHNICAL SPECIFICATION

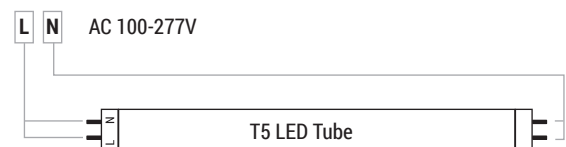
WATTAGE	25W
LUMENS	3,500 lumens
EFFICACY	140 lm/W
VOLTAGE	AC100-277V
POWER FREQUENCY	50/60 Hz
CCT	5000K
CRI	Ra>80
BEAM ANGLE	180°
LENS TYPE	Frosted
WORKING TEMP.	-4°F - +131°F
STORAGE TEMP.	-40°F - +140°F
IP RATING	IP40 Suitable for damp locations
DIMMABLE	Non-dimmable
POWER FACTOR	>0.9
THD	≤20%
WARRANTY	5 year limited
PORTOR CAT#	PT-T5-4FB-25W-5K-F



DIMENSION



WIRING DIAGRAM



MODEL NUMBER(S)

MODEL#	WATTS	LUMENS	LM/WATT	CCT	CRI	LENS	VOLTAGE
T5L-ISFH14-3500	25W	3,500	140	5000K	>80	Frosted	AC 100/277V