

Project Name:	Notes:	Date:	Type:
---------------	--------	-------	-------

**DESCRIPTION**

The Portor's VTF series is IP66 rated and can be used indoors or outdoors, as it protects against water, dust, and vapor. Comes standard with surface mounting kit.

Ideal use for sports facilities, hospitals, workshops, parking lots, warehouses, agricultural areas and a variety of other locations.



**CONSTRUCTION**

Excellent optical design, greatly improves the light utilization and evenness. The LED driver is mounted in direct contact with the casting to promote low operating temperature and long life.

**ELECTRICAL**

Luminaire is built with the highest quality 100-277VAC drivers.

**OPTICAL SYSTEM**

Designed to reduce glare and improve light distribution through precision formed lens optics.

**DIMMING**

0-10V dimmable standard

**CERTIFICATION**

ETL Listed, FCC, RoHS, CE, IP66 Rated

**TECHNICAL SPECIFICATION**

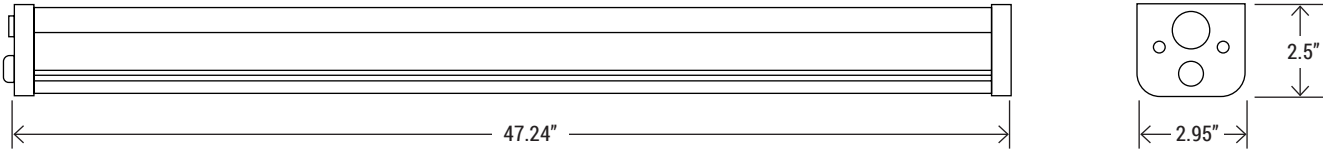
WATTAGE	40W
LUMENS	5,081 lumens
EFFICACY	136 lm/W
VOLTAGE	AC100-277V
POWER FREQUENCY	50/60 Hz
CCT	4000K
CRI	Ra>80
BEAM ANGLE	120°
WORKING TEMP.	-4°F - +122°F
IP RATING	IP66 Wet Location
DIMMABLE	1-10V dimming
POWER FACTOR	>0.9
THD	≤15%
WARRANTY	5 year limited
PORTOR CAT#	<b>PT-VTF-40W-4K</b>



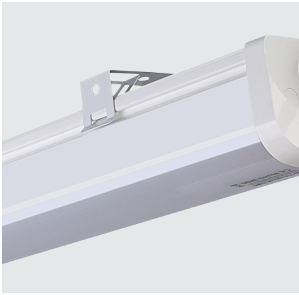
MODEL NUMBER(S)						
MODEL#	WATTS	LUMENS	LM/WATT	CCT	CRI	VOLTAGE
<b>FLT-TPM40-40L12</b>	40W	5,081	136	4000K	>80	AC 100/277V
<b>FLT-TPM50-40L12</b>	40W	5,226	139	5000K	>80	AC 100/277V

Project Name:	Notes:	Date:	Type:
---------------	--------	-------	-------

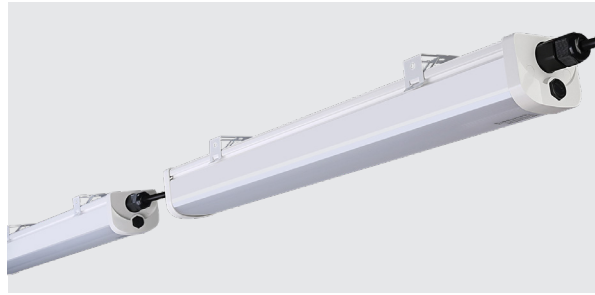
**DIMENSION**



**MOUNTING**



Comes standard with surface mounting kit



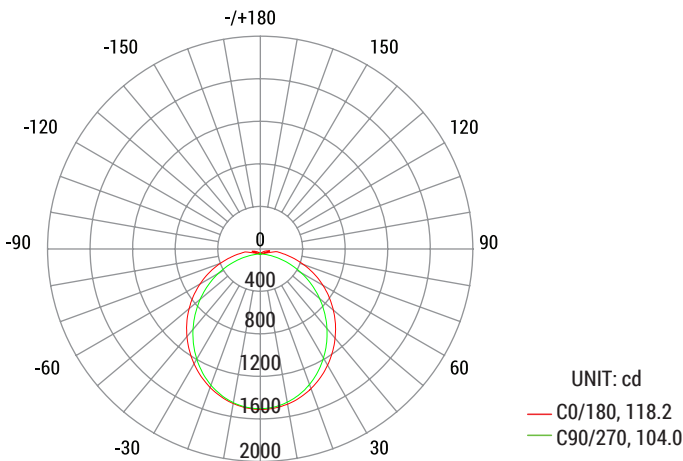
Continuous row mounting

**OPTION**



Pre-installed Emergency Battery Back-up option available

**PHOTOMETRY**



Average Beam Angle (50%) : 111.1 degree