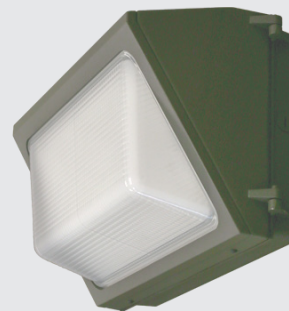


Project Name:	Notes:	Date:	Type:
---------------	--------	-------	-------

DESCRIPTION

Excellent luminaire to secure your perimeter and areas, where you need lighting most. The LED driver is mounted in direct contact with the casting to promote low operating temperature and long life.

Ideal use for warehouses, walkways, building entry ways, parking lots, school/campuses, shopping centers and industrial areas.



CONSTRUCTION

Die-cast aluminum housing. Sealed by a silicone ring that makes the fixture waterproof, Internal level ensures installation is horizontal.

ELECTRICAL

Luminaire is built with the highest quality 100-277VAC universal drivers.

OPTICAL SYSTEM

Robust glass lens designed to reduce glare and improved light distribution through precision formed lens optics.

CERTIFICATION

ETL Listed for Wet Location, FCC, RoHS, CE, IP65 Rated

TECHNICAL SPECIFICATION

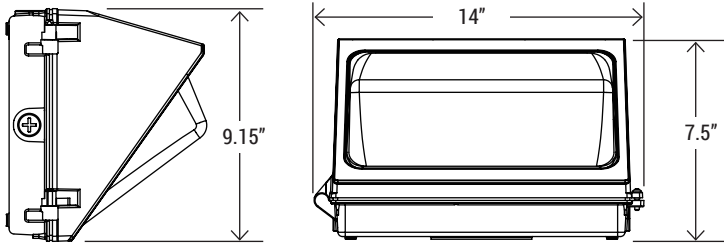
WATTAGE	100W
LUMENS	14,463 lumens
EFFICACY	140 lm/W
VOLTAGE	AC100-277V
POWER FREQUENCY	50/60 Hz
CCT	5000K (other CCT custom order)
CRI	Ra>70
WORKING TEMP.	-30°F - +122°F
IP RATING	IP65 Wet Location
DIMMABLE	Non dimmable
POWER FACTOR	>0.95
THD	≤12%
WARRANTY	5 year limited
PORTOR CAT#	PT-WPH1-100W-5K



MODEL NUMBER(S)						
MODEL#	WATTS	LUMENS	LM/WATT	CCT	CRI	VOLTAGE
LED-1302-50W-50D	50W	6,849	136	5000K	>70	AC 100/277V
LED-1302-80W-50D	80W	11,298	145	5000K	>70	AC 100/277V
LED-1302-100W-50D	100W	14,463	140	5000K	>70	AC 100/277V
LED-1302-120W-50D	120W	17,534	145	5000K	>70	AC 100/277V
LED-1303-150W-50D	150W	20,563	145	5000K	>70	AC 100/277V

Project Name:	Notes:	Date:	Type:
---------------	--------	-------	-------

DIMENSION



OPTIONS



PT-A-PSA
Adjustable Photocell



PT-A-PSB
Photocell

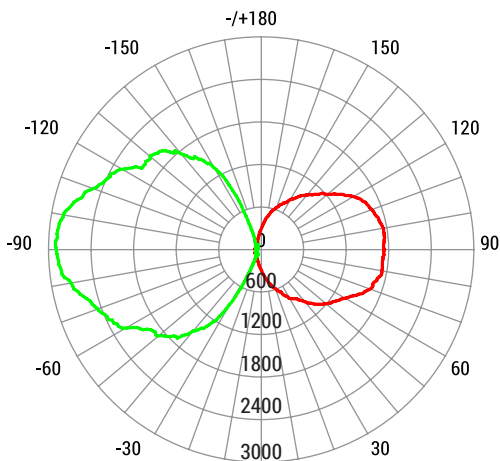


PT-A-SP
Surge Protector



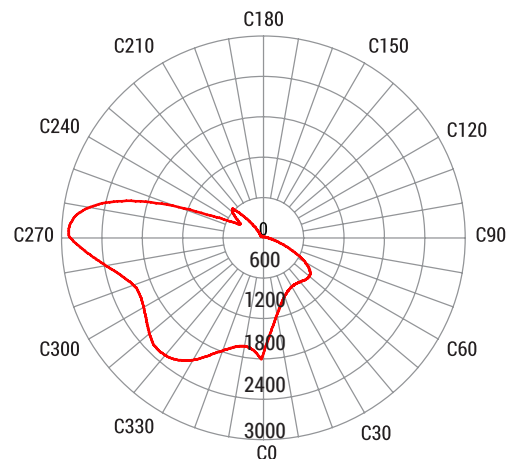
MS-WP
Line Voltage Passive
Infrared Outdoor Sensor

PHOTOMETRY



Average Beam Angle (50%) : 108.5 degree

UNIT: cd
 — C0/180, 102.8
 — C30/210, 114.1



HOUSE SIDE Max @ y = 92.0 degree STREET SIDE