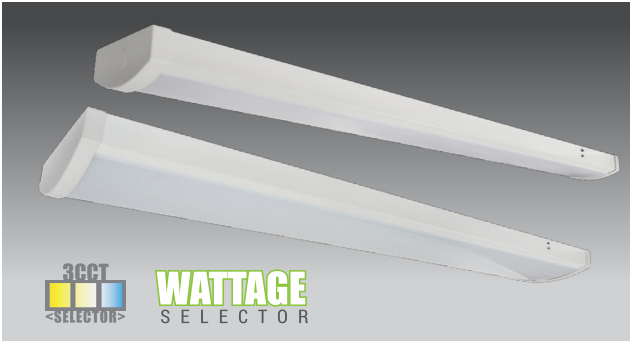


INSTALLATION INSTRUCTIONS

MODERN/SLIM WRAPAROUND

PT-WAM-4F9I-3CP / PT-WAS-4F5I-3CP

PORTOR
LIGHTING
a PORTOR INDUSTRY brand



WARNING

- TO REDUCE THE RISK OF DEATH, PERSONAL INJURY OR PROPERTY DAMAGE FROM FIRE, ELECTRIC SHOCK, FALLING PARTS, CUTS/ABRASIONS, AND OTHER HAZARDS READ ALL WARNINGS AND INSTRUCTIONS INCLUDED WITH AND ON THE FIXTURE BOX AND ALL FIXTURE LABELS.
- BEFORE INSTALLING, SERVICING, OR PERFORMING ROUTINE MAINTENANCE UPON THIS EQUIPMENT, FOLLOW THESE GENERAL PRECAUTIONS.
- COMMERCIAL INSTALLATION, SERVICE AND MAINTENANCE OF LUMINAIRES SHOULD BE PERFORMED BY A QUALIFIED LICENSED ELECTRICIAN.
- FOR THE INSTALLATION: IF YOU ARE UNSURE ABOUT THE INSTALLATION OR MAINTENANCE OF THE LUMINAIRES, CONSULT A QUALIFIED LICENSED ELECTRICIAN AND CHECK YOUR LOCAL ELECTRICAL CODE.
- TO PREVENT WIRING DAMAGE OR ABRASION, DO NOT EXPOSE WIRING TO EDGES OF SHEET METAL OR OTHER SHARP OBJECTS.
- DO NOT MAKE OR ALTER ANY OPEN HOLES IN AN ENCLOSURE OF WIRING OR ELECTRICAL COMPONENTS DURING KIT INSTALLATION.

CAUTION

- AVOID DIRECT EYE EXPOSURE TO THE LIGHT SOURCE WHILE IT IS ON.
- ACCOUNT FOR SMALL PARTS AND DESTROY PACKING MATERIAL, AS THESE MAY BE HAZARDOUS TO CHILDREN.
- RISK OF BURN. DISCONNECT POWER AND ALLOW FIXTURE TO COOL BEFORE CHANGING BULB OR HANDLING FIXTURE.

WARNING

- RISK OF FIRE OR ELECTRIC SHOCK
- TURN OFF ELECTRICAL POWER AT FUSE OR CIRCUIT BREAKER BOX BEFORE WIRING FIXTURE TO THE POWER SUPPLY.
- TURN OFF THE POWER WHEN YOU PERFORM ANY MAINTENANCE.
- VERIFY THAT SUPPLY VOLTAGE IS CORRECT BY COMPARING IT WITH THE LUMINAIRE LABEL INFORMATION.
- ALL WIRING CONNECTIONS SHOULD BE CAPPED WITH UL APPROVED WIRE CONNECTORS.

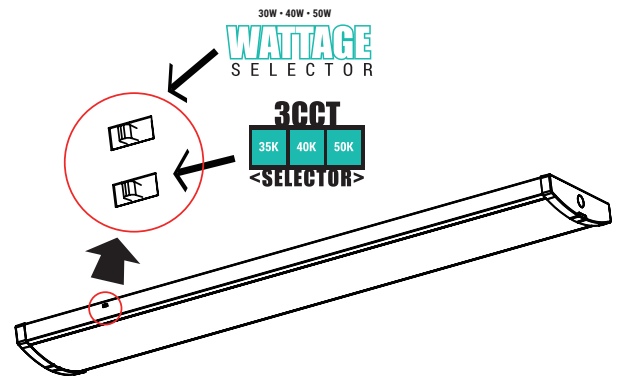
INSTALLATION (ALWAYS TURN OFF THE POWER SUPPLY FROM MAIN CIRCUIT BREAKER FIRST!)

FIELD-ADJUSTABLE CCT AND WATTAGE

The end users may adjust the color temperature and lumen output respectively by the two DIP switch buttons integrated into the driver. Each DIP switch is accommodated with 3 options (left, middle and right), corresponding to 3 color temperatures and 3 powers respectively, which can perform the desired color temperature and lumen output combination.

Factory Default Settings: 50W @ 5000K

1. DIP switches are located onto the side of the fixture.
2. Select a wattage and color temperature by sliding switch left or right respectively to the desired value.

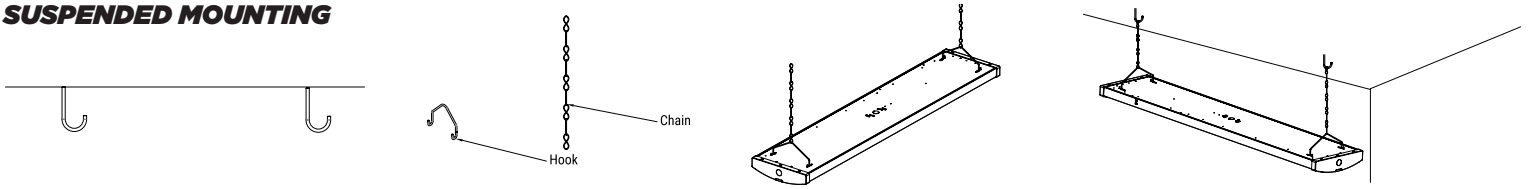


SURFACE MOUNTING

1. Drill 4 holes in the ceiling as figure; insert the anchor into each hole (Distance of holes as shown in figure).
2. Use the screwdriver to open the buckle at the end cap of both sides.
3. Take out the Lens and peel off the protective film on the lens.
4. Make the wiring according to below figure and use the provided cable ties to organize the cables and put them into the junction box.
5. Screw the fixture back shell to the ceiling (screws provided).
6. Tighten the screws to complete back shell installation.
7. Embed one terminal of lens to one end cap first, then embed other terminal to other end cap, push one terminal into the end cap.
8. Put the Lens into the slot of the back shell from one side to the other, check the Lens if assembled in place.
9. Close the buckle on the end cap, and adjust the Len to the middle position without gaps at both ends.

INSTALLATION (ALWAYS TURN OFF THE POWER SUPPLY FROM MAIN CIRCUIT BREAKER FIRST!)

SUSPENDED MOUNTING



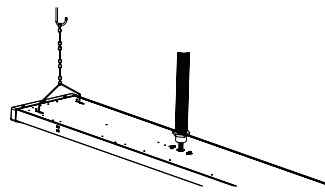
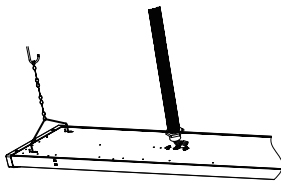
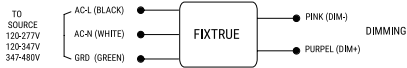
1. Step 1: Install the main hooks according to the spacing shown in figure (Main hooks are not provided).

2. Take the fixture hooks and hanging chain from the accessory bag.

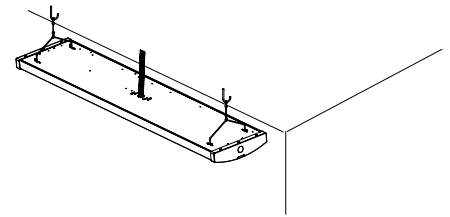
3. Put the hanging chain into the fixture hook, get the hook into the fixture back shell as shown in figure.

4. Hook the chains into the ceiling main hooks.

5. Make the wiring as below diagram.

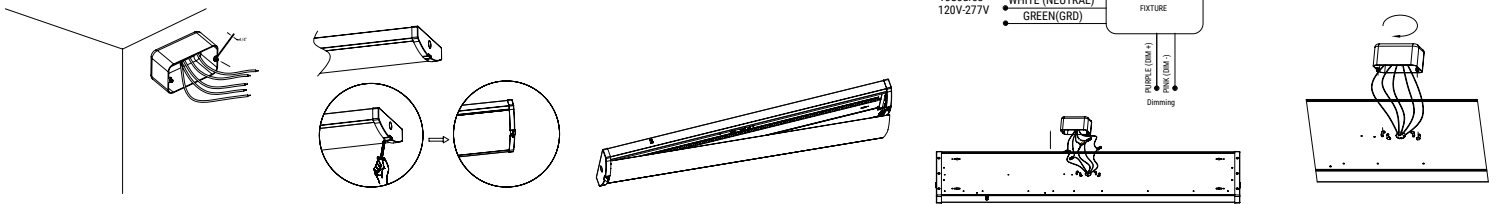


6. Get the wire connecting terminals inside of back shell.



7. Install the wire tube into the fixture housing and tear off the protective film on the lens.

JUNCTION BOX MOUNTING



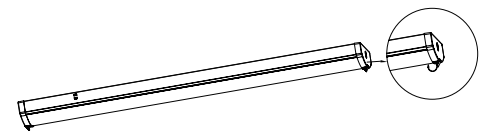
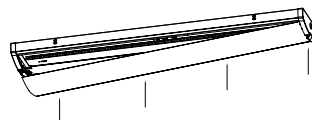
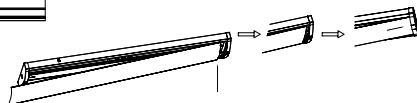
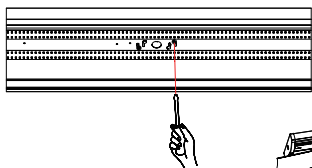
1. Install the wire tube into the fixture housing and tear off the protective film on the lens.

2. Use the screwdriver to open the buckle at the end cap of both sides.

3. Take out the Lens and peel off the protective film on the lens.

4. Make the wiring according to below figure and use the provided cable ties to organize the cables and put them into the junction box.

5. Align the screws on the junction box to the back shell of fixture, so that the junction box is attached to the back shell and then rotate clockwise .



6. Tighten the screws on the front of the fixture back shell to complete the assembly of the junction box.

7. Embed one terminal of lens to one end cap first, then embed other terminal to other end cap, push one terminal into the end cap.

8. Put the Lens into the slot of the back shell from one side to the other, check the lens if assembled in place.

9. Close the buckle on the end cap, and adjust the lens to the middle position without gap at both ends.