

INDUSTRIAL AND HIGH-COMMERCIAL LIGHTING MANUFACTURER

CLTP Series

Tri-Proof LED Luminaire



The CLTP series is IP66 rated and can be used indoors or outdoors, as it protects against water, dust, and vapor. Comes standard with surface mounting kit.

Ideal use for sports facilities, hospitals, workshops, parking lots, warehouses, and a variety of other locations.



CONSTRUCTION

Excellent optical design, greatly improves the light utilization and evenness. The LED driver is mounted in direct contact with the casting to promote low operating temperature and long life.

ELECTRICAL

Luminaire is built with the highest quality 100-277VAC drivers.

OPTICAL SYSTEM

Designed to reduce glare and improve light distribution through precision formed lens optics.

DIMMING

Continuous dimming (0-10V) comes standard. Compatible with dimmers, sensors and controls for deeper energy-savings.

MOUNTING

Surface mount bracket included.

ENERGY SAVINGS

Over 50% energy savings than traditionally fluorescent fixtures, low heat productions requires less maintenance and operation cost.

LISTING

ETL Listed, IP66 Rated, RoHS

WARRANTY

5 year Limited Warranty

PART NO.	DELIVERED LUMENS	EFFICACY
CLTP-4FT-40W	5,081 @ 4000K	137 lm/W
	5,225 @ 5000K	138 lm/W
CLTP-8FT-80W	10,160 @ 4000K	137 lm/W
	10,450 @ 5000K	138 lm/W

Based on delivered wattage of 37W.

TECHNICAL SPECIFICATION

CCT	4000K, 5000K
CRI	80+
DIMMABLE	0-10V dimming
BEAM ANGLE	120°
VOLTAGE	100V-277V
POWER FREQUENCY	50/60 Hz
POWER FACTOR	>0.9
THD	≤20%
TEMPERATURE RATED	-40°F ~ 122°F
IP RATING	IP66
WARRANTY	5 year limited

ORDERING SAMPLE:

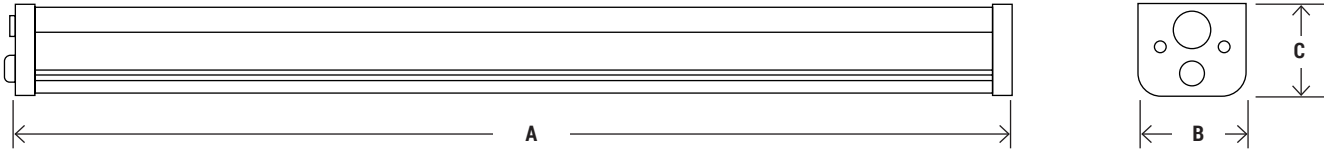
CLTP	-	4FT	-	40W	-	50K	-		-		-	
Series		Size		Wattage		CCT		Mounting		Options		EM Battery
CLTP		4FT - 4'		40W		40K - 4000K 50K - 5000K		A-CBL - Cable		MS - Motion Sensor		EM - EM Battery
Tri-Proof Series		8FT - 8'		80W								

Catalog Number:	Note:
Project Name:	Type:

INDUSTRIAL AND HIGH-COMMERCIAL LIGHTING MANUFACTURER

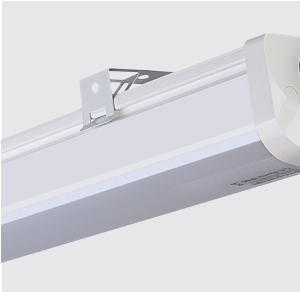
CLTP SERIES

DIMENSIONS

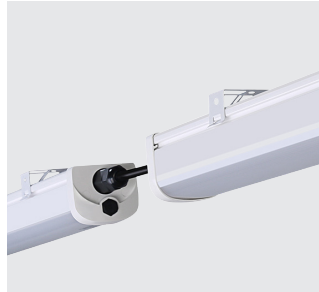


CATALOG NUMBER	A	B	C
CLTP-4FT-40W	47.25"	2.95"	2.52"
CLTP-8FT-80W	94.5"		

MOUNTING OPTIONS



Comes standard with surface mounting kit



Continuous row mounting



A-CBL
Aircraft Cable
(Chain or cable sold separate)

MOTION SENSOR OPTION



Pre-installed Motion Sensor option available
(Contact factory for lead time)

EM BATTERY OPTION



Pre-installed Emergency Battery Back-up option available
(Contact factory for lead time)