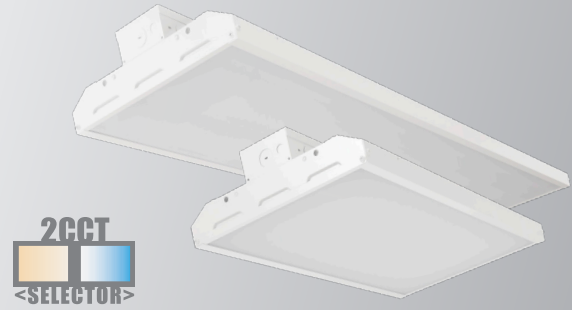


Catalog Number:	Project Name:	Note:	Date:	Type:
-----------------	---------------	-------	-------	-------

Portor's Next Generation LED Linear High Bay provides high performance efficient and quality light output. Perfect for high ceiling commercial application. Portor can also provide in-house installation solution for accessories such as for Motion Sensor or Emergency Battery Back-up. Saving additional labor cost and installation lead time.

Ideal use for commercial application such as large warehouse, parking/storage garage, gymnasium and retail stores with high ceiling.



**CONSTRUCTION**

Sleek slim design high bay with durable and solid form factor frame. Made out of quality aluminum alloy body with white finish.

**ELECTRICAL**

Luminaire is built with high efficacy LED package 120V-277V universal drivers.

**OPTICAL SYSTEM**

High performance light output perfect for high ceiling. Optic lens designed to reduce glare and improve light distribution through precision lens optics.

**ENERGY SAVINGS**

Over 50% energy savings compare to fluorescent fixtures. Low heat production from LED technology will require overall less maintenance and operating cost.

**MOUNTING**

Comes standard with V-Hooks and chains, Option available for pendant mount and surface mount kit.

**CONTROLS**

Option available for dimmers, occupancy sensors and daylight harvesting to maximize energy savings.

**LISTING**

UL Listed , DLC Premium Listed

**WARRANTY**

5 Years Limited Warranty, Rated for 50,000 hours (See Warranty documentation for details).

	WATTAGE	DELIVERED LUMENS	EFFICACY
2'	105W	14,175	141 lm/W
	155W	20,925	135 lm/W
	170W	22,950	137 lm/W
4'	210W	28,350	139 lm/W
	300W	40,500	133 lm/W

Based on 4000K, 82 CRI. Actual lumens may vary.

**TECHNICAL SPECIFICATION**

CCT	4000K/5000K
CRI	82
DIMMABLE	0-10V dimming
VOLTAGE	120V-277V
POWER FREQUENCY	50/60 Hz
POWER FACTOR	0.9
THD	20%
WORKING TEMPERATURE	-4°F ~ 104°F
STORAGE TEMPERATURE	-22°F ~ 140°F
IP RATING	Suitable for damp locations
WARRANTY	5 year limited



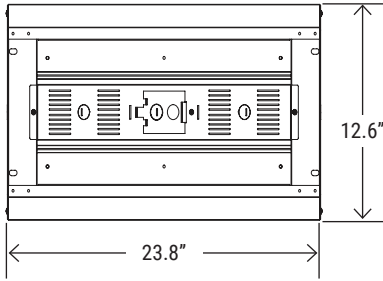
ORDERING SAMPLE:  -  -  -  -  -  -  -

Series	Wattage	CCT
<b>PT-LHB</b> LED Linear High Bay Series	<b>105W</b> <b>155W</b> <b>170W</b> <b>210W</b> <b>300W</b>	<b>2CCT</b> (4000K/5000K)

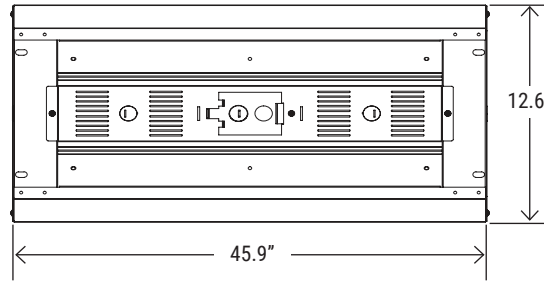
Accessories/Options				
EM Battery	Transformer	Sensor	Wireguard	Mounting
PT-EM1-15W* PT-EM1-30W**	PT-SDT-325	Blank PT-UNI2-SP-PR ELB-UNI MSH-RC2 PT-UNI-35-NDP ELB-UNI-35 MSS-RC-100	WG-HBL4-2FT WG-HBL4-4FT	Blank (Standard V-hook) PM-HBL4 SMK-HBL4

Catalog Number:	Project Name:	Note:	Date:	Type:
-----------------	---------------	-------	-------	-------

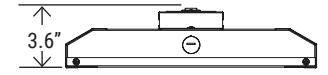
**DIMENSION**



**2'** 105W / 155W

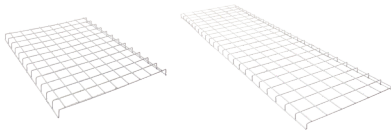


**4'** 170W / 210W / 300W



**SIDE PROFILE**

**WIRE GUARD OPTION**



**WG-HBL4-2FT**  
Wire guard for 105W / 155W

**WG-HBL4-4FT**  
Wire guard for 170W / 240W / 300W

**TRANSFORMER OPTION**



**PT-SDT-325**  
Step-down Auto-transformer

**EM BATTERY OPTION**



**PT-EM1-15W\* / PT-EM1-30W\*\***  
LED Emergency Driver  
*\*Only works with 105W, 150W (max)*  
*\*\*Will work with 170W, 210W, 300W*

**MOUNTING OPTION**



**PM-HBL4**  
Pendant Mount



**SMK-HBL4**  
Surface Mount Kit

**SENSOR OPTION**



**PT-UNI2-SP-PR**  
Dimmable PIR Motion Sensor with Daylight Harvesting



**ELB-UNI**  
Elbow for UNI2-SP-PR (Required)



**MSH-RC2**  
Intelligent Control Unit



**PT-UNI-35-NDP**  
Dimmable PIR Motion Sensor



**ELB-UNI-35**  
Elbow for UNI-35-NDP (Required)



**MSS-RC-100**  
Intelligent Control Unit



CATALOG NUMBER	WATTAGE	DELIVERED LUMENS	EFFICACY	DLC PRODUCT ID	CLASSIFICATION
<b>PT-LHB-105W-2CCT</b>	105W	14,175	141 lm/W	<b>S-JDT39V</b>	PREMIUM
<b>PT-LHB-155W-2CCT</b>	155W	20,925	135 lm/W	<b>S-EMZU6J</b>	PREMIUM
<b>PT-LHB-170W-2CCT</b>	170W	22,950	137 lm/W	<b>S-FAD4Z7</b>	PREMIUM
<b>PT-LHB-210W-2CCT</b>	210W	28,350	139 lm/W	<b>S-ODAZIC</b>	PREMIUM
<b>PT-LHB-300W-2CCT</b>	300W	40,500	133 lm/W	<b>S-TURHP3</b>	PREMIUM

Based on 4000K, 82 CRI. Actual lumens may vary.

**PT-LHB-105W**

Wattage: 105W

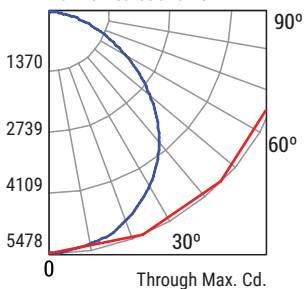
Delivered lumens: 14176

Efficacy: 136 lm/W

CCT: 5000K

CRI: 80

Maximum Candela : 5478.1



— Vertical Plane Through Horizontal Angles (90 - 270)  
— Horizontal Cone Through Vertical Angle (1)

**Coefficients of Utilization**

pfc	20%											
	80%				70%				50%			
	70%	50%	30%	10%	70%	50%	30%	10%	50%	30%	10%	
pcc												
pw												
RCR	0	1	2	3	4	5	6	7	8	9	10	
	119	109	100	91	84	77	71	66	62	58	54	
	119	105	92	81	75	69	64	60	57	54	51	
	119	101	85	73	67	62	58	54	51	48	45	
	119	97	80	67	61	56	52	49	46	43	40	
	116	103	87	74	68	63	59	55	52	49	46	
	116	99	81	68	62	57	53	50	47	44	41	
	116	96	79	66	60	55	51	48	45	42	39	
	111	92	75	62	56	51	47	44	41	38	35	
	111	88	71	58	52	47	43	40	37	34	31	
	111	84	67	54	48	43	39	36	33	30	27	
	111	80	63	50	44	39	35	32	29	26	23	
	111	76	59	46	40	35	31	28	25	22	19	
	111	72	55	42	36	31	27	24	21	18	15	
	111	68	51	38	32	27	23	20	17	14	11	
	111	64	47	34	28	23	19	16	13	10	7	
	111	60	43	30	24	19	15	12	9	6	3	
	111	56	39	26	20	15	11	8	5	2	0	
	111	52	35	22	16	11	7	4	1	0	0	
	111	48	31	18	12	7	3	0	0	0	0	
	111	44	27	14	8	3	0	0	0	0	0	
	111	40	23	10	4	0	0	0	0	0	0	
	111	36	19	6	0	0	0	0	0	0	0	
	111	32	15	2	0	0	0	0	0	0	0	
	111	28	11	0	0	0	0	0	0	0	0	

**CP Summary**

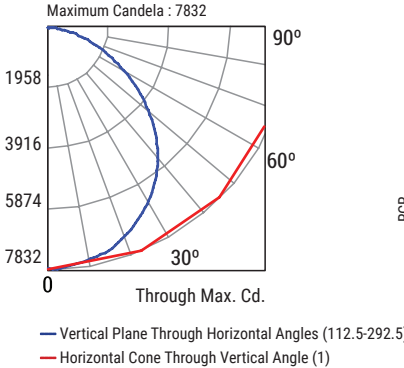
	0°	90°
0°	5457.6	5457.6
5°	5426.7	5421.0
15°	5221.5	5225.2
25°	4815.9	4795.3
35°	4242.1	4204.2
45°	3436.1	3411.2
55°	2490.5	2454.1
65°	1552.7	1497.6
75°	745.6	702.4
85°	162.7	132.3
90°	12.9	16.1

**Zonal Lumen Summary**

	Lumens	%Fixture
0° - 20°	1983.52	14.00
0° - 30°	4190.27	29.60
0° - 40°	6817.56	48.10
0° - 60°	11656.22	82.20
0° - 80°	13941.92	98.40
0° - 90°	14118.82	99.60

Catalog Number:	Project Name:	Note:	Date:	Type:
-----------------	---------------	-------	-------	-------

<b>PT-LHB-155W</b>	Wattage: <b>155W</b>	Delivered lumens: <b>20443</b>	Efficacy: <b>137 lm/W</b>	CCT: <b>5000K</b>	CRI: <b>80</b>
--------------------	----------------------	--------------------------------	---------------------------	-------------------	----------------

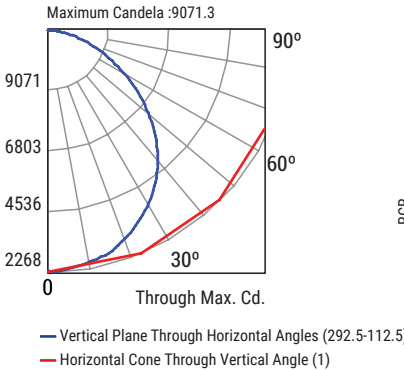


RCR	Coefficients of Utilization												
	pfc	80%				70%				50%			
		pcc	pw	70%	50%	30%	10%	70%	50%	30%	10%	50%	30%
0		119	119	119	119	116	116	116	116	111	111	111	
1		109	105	101	97	107	103	99	96	98	95	93	
2		100	92	86	80	97	90	84	79	87	81	77	
3		91	81	73	67	89	80	72	67	77	70	65	
4		84	72	64	57	82	71	63	57	68	62	56	
5		77	65	56	50	75	64	55	49	61	54	49	
6		71	58	50	43	69	57	49	43	56	48	43	
7		66	53	44	38	65	52	44	38	51	43	38	
8		62	48	40	34	60	48	40	34	46	39	34	
9		58	44	36	31	56	44	36	31	43	36	31	
10		54	41	33	28	53	41	33	28	40	33	28	

CP Summary		
	0°	90°
0°	7810.3	7810.3
5°	7768.9	7753.2
15°	7490.2	7485.3
25°	6918.0	6914.7
35°	6138.4	6101.0
45°	4979.2	4956.4
55°	3583.7	3525.2
65°	2195.6	2088.0
75°	1038.5	964.1
85°	224.0	184.3
90°	16.4	12.8

Zonal Lumen Summary		
	Lumens	%Fixture
0° - 20°	2845.31	13.90
0° - 30°	6029.64	29.50
0° - 40°	9847.17	48.20
0° - 60°	16883.48	82.60
0° - 80°	20112.90	98.40
0° - 90°	20360.50	99.60

<b>PT-LHB-170W</b>	Wattage: <b>170W</b>	Delivered lumens: <b>23302</b>	Efficacy: <b>139 lm/W</b>	CCT: <b>5000K</b>	CRI: <b>80</b>
--------------------	----------------------	--------------------------------	---------------------------	-------------------	----------------

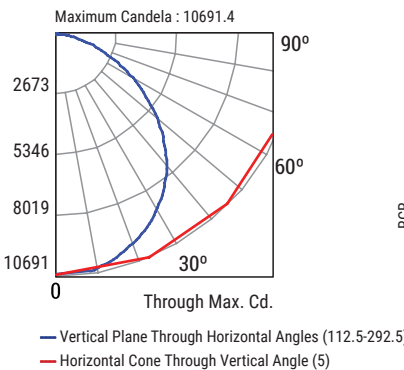


RCR	Coefficients of Utilization												
	pfc	80%				70%				50%			
		pcc	pw	70%	50%	30%	10%	70%	50%	30%	10%	50%	30%
0		119	119	119	119	116	116	116	116	111	111	111	
1		109	105	101	97	107	103	99	96	98	95	93	
2		100	92	86	80	97	90	84	79	87	81	77	
3		91	81	73	67	89	80	72	67	77	70	65	
4		84	72	64	57	82	71	63	57	68	62	56	
5		77	65	56	50	75	64	55	49	61	54	49	
6		71	58	50	43	69	57	49	43	56	48	43	
7		66	53	44	38	65	52	44	38	51	43	38	
8		62	48	40	34	60	48	40	34	46	39	34	
9		58	44	36	31	56	44	36	31	43	36	31	
10		54	41	33	28	53	41	33	28	40	33	28	

CP Summary		
	0°	90°
0°	8962.5	8962.5
5°	8904.9	9024.9
15°	8593.8	8652.0
25°	7925.8	7908.7
35°	6958.6	6878.7
45°	5654.6	5467.2
55°	4135.3	3934.8
65°	2597.2	2390.4
75°	1256.0	1111.4
85°	257.0	191.4
90°	15.5	7.4

Zonal Lumen Summary		
	Lumens	%Fixture
0° - 20°	3283.5	14.10
0° - 30°	6934.18	29.80
0° - 40°	11264.4	48.30
0° - 60°	19180.00	82.30
0° - 80°	22938.49	98.40
0° - 90°	23223.4	99.70

<b>PT-LHB-215W</b>	Wattage: <b>210W</b>	Delivered lumens: <b>27924</b>	Efficacy: <b>136 lm/W</b>	CCT: <b>5000K</b>	CRI: <b>80</b>
--------------------	----------------------	--------------------------------	---------------------------	-------------------	----------------

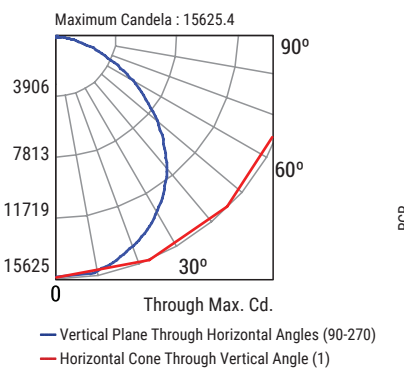


RCR	Coefficients of Utilization												
	pfc	80%				70%				50%			
		pcc	pw	70%	50%	30%	10%	70%	50%	30%	10%	50%	30%
0		119	119	119	119	116	116	116	116	111	111	111	
1		109	105	101	97	107	103	99	96	98	95	93	
2		100	92	85	80	97	90	84	79	87	81	77	
3		91	81	73	67	89	80	72	66	77	70	65	
4		84	72	64	57	82	71	63	57	68	61	56	
5		77	65	56	49	75	63	55	49	61	54	49	
6		71	58	50	43	69	57	49	43	55	48	43	
7		66	53	44	38	65	52	44	38	51	43	38	
8		62	48	40	34	60	48	40	34	46	39	34	
9		58	44	36	31	56	44	36	31	43	36	31	
10		54	41	33	28	53	40	33	28	39	33	28	

CP Summary		
	0°	90°
0°	10546.280	10546.280
5°	10483.700	10640.400
15°	10177.100	10241.600
25°	9466.600	9448.500
35°	8390.500	8322.500
45°	6902.300	6736.400
55°	5097.900	4909.700
65°	3169.100	3021.300
75°	1534.800	1420.700
85°	353.400	283.300
90°	31.900	25.100

Zonal Lumen Summary		
	Lumens	%Fixture
0° - 20°	3873.96	13.90
0° - 30°	8206.24	29.40
0° - 40°	13384.94	47.90
0° - 60°	22960.76	82.20
0° - 80°	27472.52	98.40
0° - 90°	27829.60	99.70

<b>PT-LHB-300W</b>	Wattage: <b>300W</b>	Delivered lumens: <b>40310</b>	Efficacy: <b>135 lm/W</b>	CCT: <b>5000K</b>	CRI: <b>80</b>
--------------------	----------------------	--------------------------------	---------------------------	-------------------	----------------



RCR	Coefficients of Utilization												
	pfc	80%				70%				50%			
		pcc	pw	70%	50%	30%	10%	70%	50%	30%	10%	50%	30%
0		119	119	119	119	116	116	116	116	111	111	111	
1		109	105	101	97	107	103	99	95	98	95	92	
2		100	92	85	80	97	90	84	79	86	81	77	
3		91	81	73	67	89	80	72	66	76	70	65	
4		84	72	63	57	82	71	63	57	68	61	56	
5		77	65	56	49	75	63	55	49	61	54	48	
6		71	58	49	43	69	57	49	43	55	48	43	
7		66	53	44	38	65	52	44	38	50	43	38	
8		62	48	40	34	60	48	40	34	46	39	34	
9		58	44	36	31	56	44	36	31	43	35	31	
10		54	41	33	28	53	40	33	28	39	33	28	

CP Summary		
	0°	90°
0°	15478.8	15478.8
5°	15310.2	15443.6
15°	14776.2	14803.9
25°	13636.2	13570.9
35°	12043.7	11827.9
45°	9717.7	9584.2
55°	7111.7	6932.0
65°	4509.6	4302.6
75°	2195.8	2075.9
85°	470.2	410.6
90°	35.9	43.1

Zonal Lumen Summary		
	Lumens	%Fixture
0° - 20°	5619.51	13.90
0° - 30°	11867.25	29.40
0° - 40°	19289.54	47.90
0° - 60°	33001.68	81.90
0° - 80°	39638.53	98.30
0° - 90°	40167.22	99.60