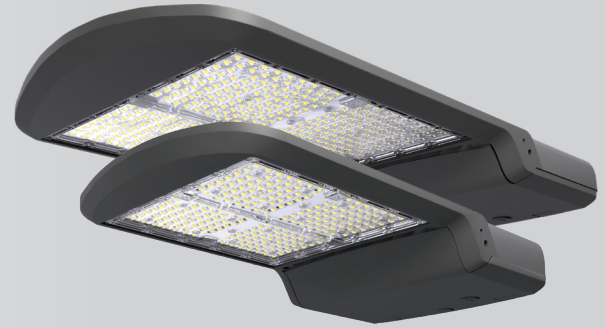


Catalog Number:	Project Name:	Note:	Date:	Type:
-----------------	---------------	-------	-------	-------

Portor's second generation AL2 Area Light Series is highly energy efficient and provides advanced optical control. The ultra slim profile delivers enhanced performance for general area lighting applications. The robust die-cast housing provides excellent thermal management for longer life and can withstand everyday harsh outdoor environments.

Ideal use for parking lots, car dealerships, walkways, school campuses, shopping centers and industrial areas



NOT FOR USE AS AN UP LIGHT

**CONSTRUCTION**

Die-cast aluminum body combined with state of the art heat dissipation. Waterproof, built rugged for outdoor harsh conditions.

**ELECTRICAL**

Built with the highest quality, long lasting Universal Voltage driver 120V-277V, 347V-480V optional, and water resistant LED chips.

**OPTICAL SYSTEM**

Comes standard with Type III optics designed to reduce glare and improve light distribution through precision formed lens optics. Type V is available.

**MOUNTING**

Multiple mounting options available: Slipfitter, square-pole mount, round-pole mount, u-bracket and trunnion mount.

**SENSOR READY**

Photocell sensor available.

**DIMMING**

1-10V dimmable

**ENERGY SAVINGS**

Over 70% energy savings than traditionally fluorescent fixtures, low heat productions requires less maintenance and operation cost.

**LISTING**

UL Listed, DLC Premium Listed, FCC, RoHS, CE, IP65 rated

**WARRANTY**

5 year Limited Warranty, Rated for 50,000 hours.

WATTAGE	DELIVERED LUMENS	EFFICACY
100W	14,241	144 lm/W
150W	21,593	145 lm/W
200W	29,757	149 lm/W
240W	35,511	147 lm/W
300W	44,324	148 lm/W
375W (Requires 2 drivers)	53,468	144 lm/w

**TECHNICAL SPECIFICATION**

CCT	3000K*, 4000K*, 5000K
CRI	70+
DIMMABLE	1-10V dimming
DISTRIBUTION	Type III, Type V
VOLTAGE	120V-277V, 347V-480V
SENSOR	Photocell capable
POWER FREQUENCY	50/60 Hz
POWER FACTOR	>0.9
THD	≤15%
WORKING TEMPERATURE	-40°F ~ 122°F
IP RATING	IP65 Wet Location
WARRANTY	5 year limited

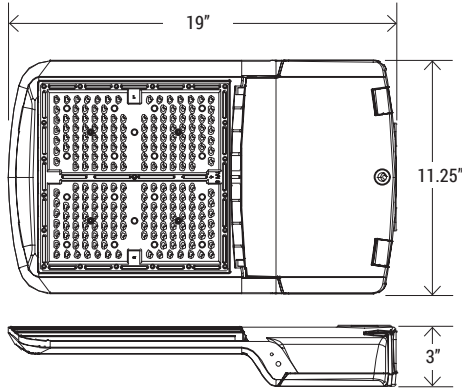


**ORDERING SAMPLE: PT-AL2N-375W-50K**

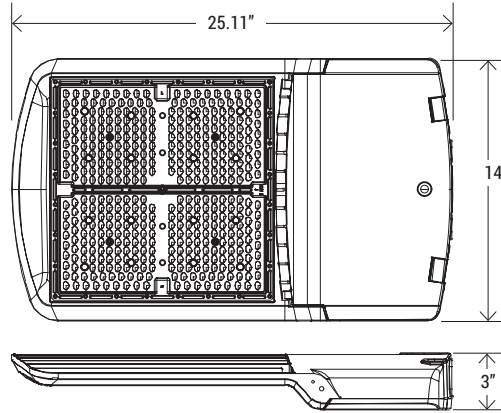
Series	Wattage	CCT	Voltage	Distribution	*Accessories/Options			
PT-AL2 Second Generation Area Light Series	100W	30K (3000K)*	LV (120V-277V)	T3 (Type III) T5 (Type V)	Mounting (select one)	Photocell	Sensor	Shield
	150W*	40K (4000K)*						
	200W*	50K (5000K)						
	240W							
	300W*							
375W	* (only for 150W, 200W, 300W)							
					SF-AL2	PC	MS-UNI-MW	SHD-AL2-SM
					SPM-AL2	PC-HV	RC-UNI-MW	SHD-AL2-LG
					SAM-AL2			
					TM-AL2			
					RPMA-AL2			

Catalog Number:	Project Name:	Note:	Date:	Type:
-----------------	---------------	-------	-------	-------

**DIMENSION**



100W / 150W



200W / 240W / 300W / 375W

**SHIELD OPTION**



**SHD-AL2-SM**  
(100W/150W)  
**SHD-AL2-LG**  
(200W/240W/300W/35W)

Shield for AL Series

**\*MOUNTING OPTION (SOLD SEPARATELY)**



**SF-AL2**  
Slipfitter



**SPM-AL2**  
Adjustable Mount For  
Square Pole



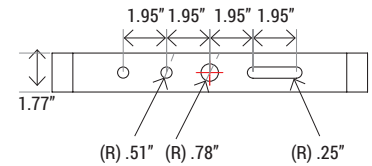
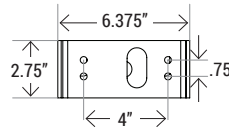
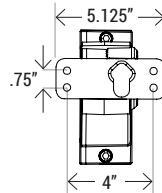
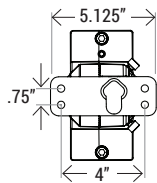
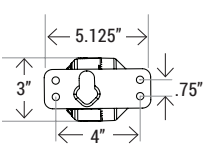
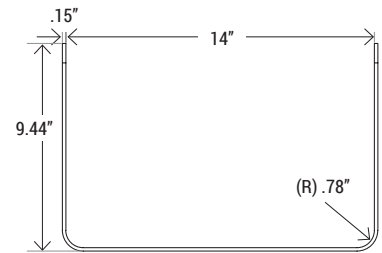
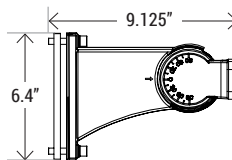
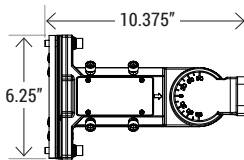
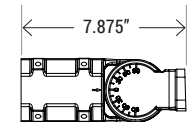
**SAM-AL2**  
Straight Arm Mount for  
Square Pole



**TM-AL2**  
Trunnion Mount



**UB-AL2**  
U-Bracket Mount



**PHOTOCELL OPTION**



**PC**  
Photocell (120V-277V)



**PC-HV**  
Photocell (480V)

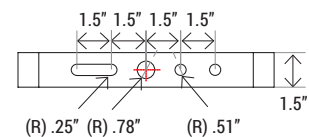
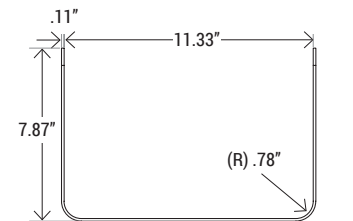
**SENSOR OPTION**



**MS-UNI-MW**  
Universal Microwave Motion Sensor



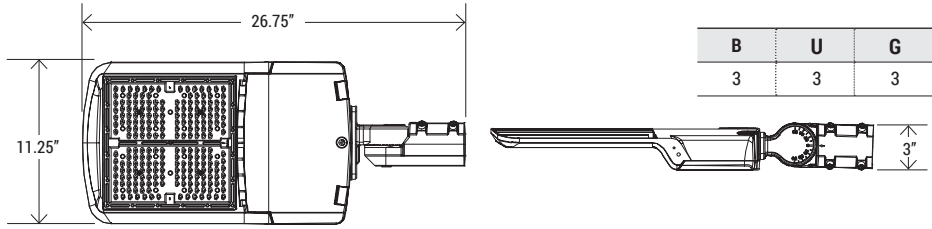
**RC-UNI-MW**  
Remote Control



Catalog Number:	Project Name:	Note:	Date:	Type:
-----------------	---------------	-------	-------	-------

**PT-AL2-100W-50K / PT-AL2-150W-50K**

EPA	<b>0.6 ft<sup>2</sup></b>
Net Weight	11.24 lbs / 11.9 lbs
Gross Weight	13.89 lbs / 14.55 lbs
Dimension	11.25" x 26.75" x 3"



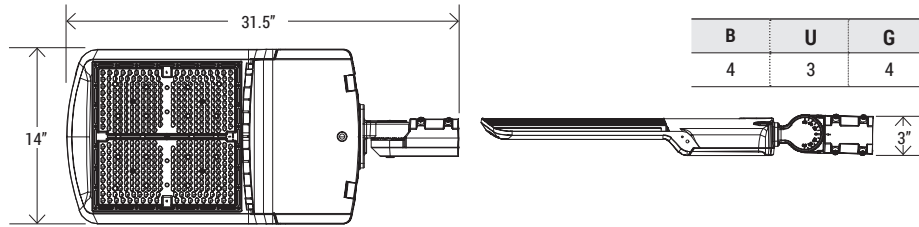
<b>B</b>	<b>U</b>	<b>G</b>
3	3	3

**\*WITH SLIPFITTER MOUNTING**

CONFIGURATION						
<b>EPA</b>	<b>0.6 ft<sup>2</sup></b>	<b>1.2 ft<sup>2</sup></b>	<b>0.9 ft<sup>2</sup></b>	<b>1.5 ft<sup>2</sup></b>	<b>1.3 ft<sup>2</sup></b>	<b>1.8 ft<sup>2</sup></b>
Net Weight	11.24 lbs / 11.9 lbs	22.48 lbs / 23.0 lbs	22.48 lbs / 23.0 lbs	33.72 lbs / 35.7 lbs	33.72 lbs / 35.7 lbs	44.96 lbs / 47.6 lbs

**PT-AL2-200W-50K / PT-AL2-240W-50K**

EPA	<b>0.8 ft<sup>2</sup></b>
Net Weight	15.65 lbs / 15.87 lbs
Gross Weight	18.75 lbs / 18.96 lbs
Dimension	14" x 31.5" x 3"



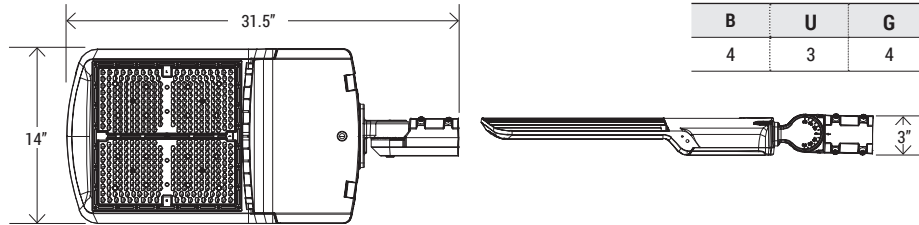
<b>B</b>	<b>U</b>	<b>G</b>
4	3	4

**\*WITH SLIPFITTER MOUNTING**

CONFIGURATION						
<b>EPA</b>	<b>0.8 ft<sup>2</sup></b>	<b>1.6 ft<sup>2</sup></b>	<b>1.2 ft<sup>2</sup></b>	<b>2.0 ft<sup>2</sup></b>	<b>1.7 ft<sup>2</sup></b>	<b>2.3 ft<sup>2</sup></b>
Net Weight	15.65 lbs / 15.87 lbs	31.3 lbs / 31.74 lbs	31.3 lbs / 31.74 lbs	46.95 lbs / 47.61 lbs	46.95 lbs / 47.61 lbs	62.6 lbs / 63.48 lbs

**PT-AL2-300W-50K / PT-AL2-375W-50K**

EPA	<b>0.8 ft<sup>2</sup></b>
Net Weight	17.42 lbs
Gross Weight	20.72 lbs
Dimension	14" x 31.5" x 3"



<b>B</b>	<b>U</b>	<b>G</b>
4	3	4

**\*WITH SLIPFITTER MOUNTING**

CONFIGURATION						
<b>EPA</b>	<b>0.8 ft<sup>2</sup></b>	<b>1.6 ft<sup>2</sup></b>	<b>1.2 ft<sup>2</sup></b>	<b>2.0 ft<sup>2</sup></b>	<b>1.7 ft<sup>2</sup></b>	<b>2.3 ft<sup>2</sup></b>
Net Weight	17.42 lbs	34.84 lbs	34.84 lbs	52.26 lbs	52.26 lbs	69.68 lbs