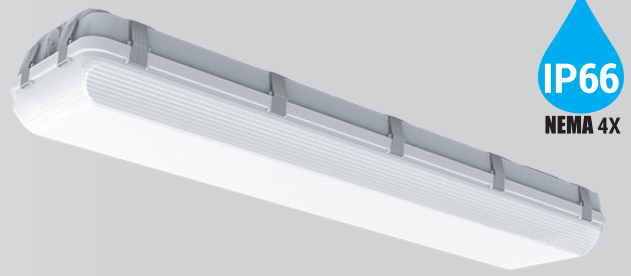


Catalog Number:	Project Name:	Note:	Date:	Type:
-----------------	---------------	-------	-------	-------

The PT-VS-WD Vapor-Seal series offers an industry-leading performance with deep energy savings and continuous dimming. This fixture is manufactured and designed using a gasketed enclosure to protect against dust, humidity and liquid spray. Easy installation for both surface-mount and suspended mount.

Perfect application for factories, tunnels, car washes, laboratories, cold storage, food processing and for vessels.



**CONSTRUCTION**

Polycarbonate housing, frosted lens, and stain-less clips offer protection against dust, humidity and water spray. Environmental-friendly powder coat painted reflector. Compact, slick profile design makes it easy for installation.

**ELECTRICAL**

Luminaire is built with the highest quality driver that is universal voltage 120-277V 50/60Hz, Class P and Class 2 with 2kV Surge Protection, uses highly-efficient LED packages to ensure cool temperatures for long lasting life span.

**OPTICAL SYSTEM**

Long life and high-efficiency surface mount LEDs. 100,000-hour LED lifespan based on LM-80 results and TM-21 calculations.

**DIMMING**

Continuous dimming (0-10V) comes standard. Compatible with dimmers, sensors and controls for deeper energy-savings.

**MOUNTING**

surface mount and suspended mount (included).

**ENERGY SAVINGS**

Over 50% energy savings than traditionally fluorescent fixtures, low heat productions requires less maintenance and operation cost.

**LISTING**

UL Listed, IP66 Rated, NEMA 4X, NSF, RoHS, DLC Premium

**WARRANTY**

5 year Limited Warranty

WATTAGE	DELIVERED LUMENS	EFFICACY
<b>4'</b> 150W/175W/200W	20,400 @ 4000K	142 lm/W

*Based on 150W and 4000K setting. Actual lumens may vary.*

**TECHNICAL SPECIFICATION**

CCT	3500K/4000K/5000K
CRI	80+
DIMMABLE	0-10V dimming
BEAM ANGLE	110°
VOLTAGE	120V-277V
POWER FREQUENCY	50/60 Hz
POWER FACTOR	>0.9
THD	≤10%
TEMPERATURE RATED	-40°F ~ 122°F
IP RATING	IP66
WARRANTY	5 year limited
DLC PRODUCT ID	S-WVDGJV

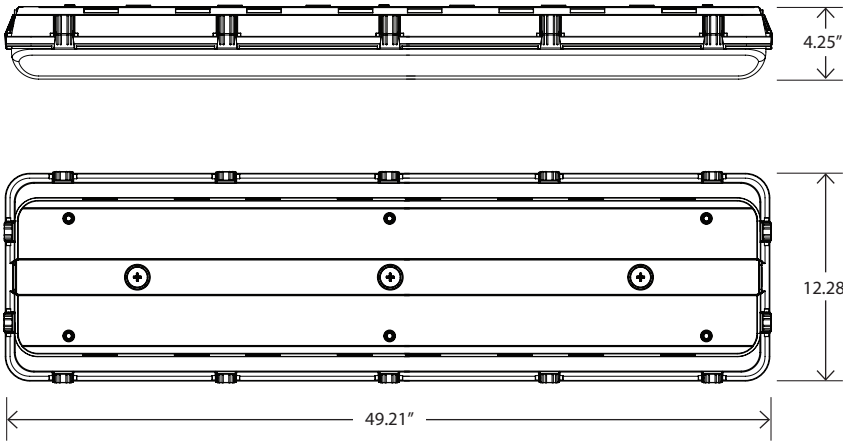


ORDERING SAMPLE:  -  -  -   -

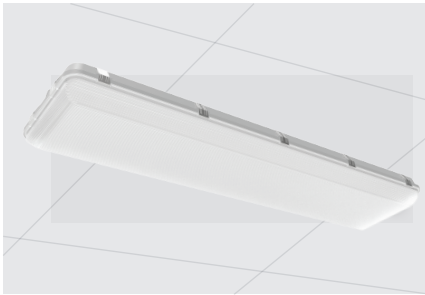
Series	Size	Feature	CCT/Wattage	Accessories / Options	
PT-VS-WD Modest Style Vapor-Seal Luminaire	4F (4 footer)	HW High Wattage	3CP (3500K/4000K/5000K) (150W/175W/200W)	EM Battery	Options
				PT-EMG-25W	PT-MSH-LV-MW

Catalog Number:	Project Name:	Note:	Date:	Type:
-----------------	---------------	-------	-------	-------

**DIMENSION**



**MOUNTING**



SM  
Surface mount  
(Included)



V-HOOK  
Suspended Mount (Included)

**MOTION SENSORS**



PT-MSH-LV-MW  
Motion Sensor



MSH-RC2  
Motion Sensor Remote

**EM BATTERY OPTION**



PT-EMG-25W  
Low Voltage EM  
Battery Back-up