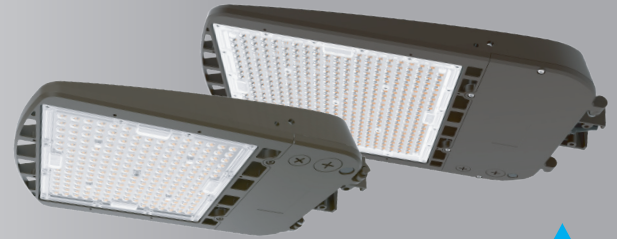


Catalog Number:	Project Name:	Note:	Date:	Type:
-----------------	---------------	-------	-------	-------

Portor's ALE Area Light Series features outstanding light output performance, uniform illumination, and high efficacy. The one piece die-cast robust aluminum housing provides excellent thermal management for longer life and can withstand everyday harsh outdoor environments.

Ideal use for parking lots, car dealerships, roadways, walkways, school campuses, shopping centers and industrial areas



**NOT FOR USE AS AN UP LIGHT**

**CONSTRUCTION**

Die-cast aluminum body combined with state of the art heat dissipation. Waterproof, built rugged for outdoor harsh conditions.

**ELECTRICAL**

Built with the highest quality, long lasting Universal Voltage driver 100V-277V (347V-480V optional), and water resistant LED chips.

**OPTICAL SYSTEM**

Comes standard with Type III optics designed to reduce glare and improve light distribution through precision formed lens optics. Type IV and Type V is available.

**MOUNTING**

Multiple mounting options available: Slipfitter comes standard, square-pole mount, round-pole mount, u-bracket and trunnion mount.

**SENSOR READY**

Photocell and motion sensor available.

**DIMMING**

0-10V dimmable

**ENERGY SAVINGS**

Over 70% energy savings than traditional fixtures, low heat productions requires less maintenance and operation cost.

**LISTING**

DLC Premium, UL Listed, RoHS, IP65 rated

**WARRANTY**

5 year Limited Warranty, Rated for 50,000 hours

	WATTAGE	CCT	LUMENS	EFFICACY
PT-ALE-150-3CP	70W	3000K	11,416	159 lm/W
	70W	4000K	12,249	179 lm/W
	70W	5000K	11,698	163 lm/W
	100W	3000K	14,133	149 lm/W
	100W	4000K	15,356	172 lm/W
	100W	5000K	14,370	152 lm/W
	150W	3000K	19,109	128 lm/W
	150W	4000K	22,107	159 lm/W
	150W	5000K	20,628	136 lm/W
PT-ALE-300-3CP	200W	3000K	30,508	147 lm/W
	200W	4000K	33,850	173 lm/W
	200W	5000K	31,421	152 lm/W
	240W	3000K	33,946	139 lm/W
	240W	4000K	38,496	167 lm/W
	240W	5000K	34,944	143 lm/W
	300W	3000K	38,164	127 lm/W
	300W	4000K	45,524	163 lm/W
	300W	5000K	39,455	132 lm/W

**TECHNICAL SPECIFICATION**

CRI	80
DIMMABLE	0-10V dimming
DISTRIBUTION	Type III (Standard), Type IV & V (Optional)
VOLTAGE	100V-277V (347V-480V optional)
POWER FREQUENCY	50/60 Hz
SENSOR	Photocell and motion sensor capable
POWER FACTOR	>0.9
THD	≤15%
WORKING TEMPERATURE	-40°F ~ 113°F
IP RATING	IP65 Wet Location
WARRANTY	5 year limited



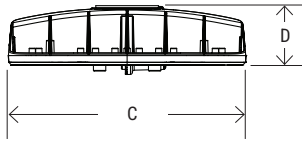
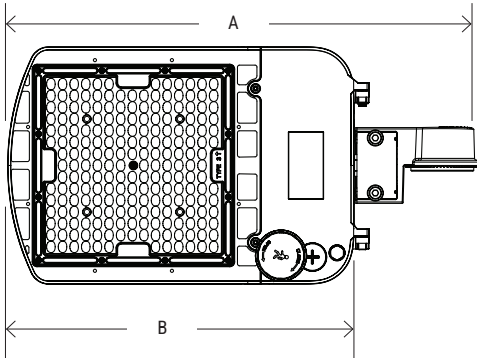
**ORDERING SAMPLE: PT-ALE-150-3CP**

Series	Series	3CP	Finish	Distribution	*Mounting (Not included)	*Accessories/Options	
PT-ALE Economy Area Light Series	150	3CP** (30K/40K/50K) (70W/100W/150W)	Blank (Bronze)	Blank (Type III) T4 (Type IV) T5 (Type V)  <i>special order required</i>	Bronze SF-AL2 SPM-AL2 SAM-AL2 TM-ALE UB-AL2-1015	Photocell	Sensor
	300	3CP** (30K/40K/50K) (200W/240W/300W)				PC	PT-UNI2-SP-MW

\*Sold separate  
\*\*HV is available

Catalog Number:	Project Name:	Note:	Date:	Type:
-----------------	---------------	-------	-------	-------

**DIMENSION**



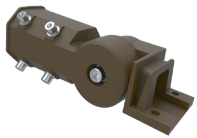
Model No.	A	B	C	D
PT-ALE-150	19.5"	14.37"	9.8"	2.37"
PT-ALE-300	24.4"	19.29"	13.3"	2.37"

QTY/CARTON

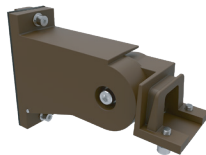


PIECE

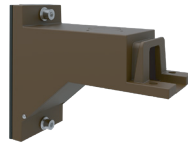
**\*MOUNTING OPTION (SOLD SEPARATELY)**



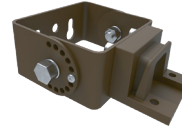
SF-AL2  
Slipfitter



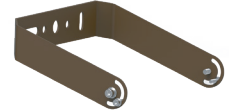
SPM-AL2  
Adjustable Mount For  
Square/Round Pole



SAM-AL2  
Straight Arm Mount for  
Square Pole



TM-ALE  
Trunnion Mount



UB-AL2-1015  
U-Bracket Mount

**ACCESSORIES (SOLD SEPARATELY)**



PC  
Photocell  
(120V-277V)



PT-UNI2-SP-MW  
Universal Short Pin Microwave Motion Sensor



PT-MSH-RC2  
Intelligent Remote Control Unit