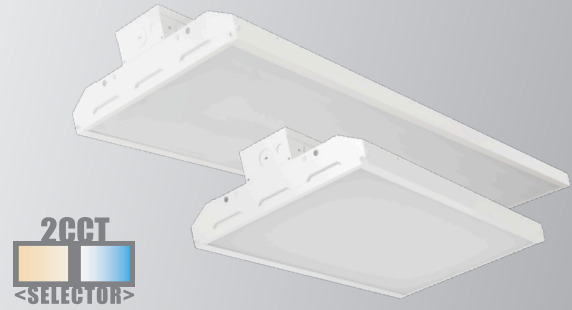


Catalog Number:	Project Name:	Note:	Date:	Type:
-----------------	---------------	-------	-------	-------

Portor's Next Generation LED Linear High Bay provides high performance efficient and quality light output. Perfect for high ceiling commercial application. Portor can also provide in-house installation solution for accessories such as for Motion Sensor or Emergency Battery Back-up. Saving additional labor cost and installation lead time.

Ideal use for commercial application such as large warehouse, parking/storage garage, gymnasium and retail stores with high ceiling.



CONSTRUCTION

Sleek slim design high bay with durable and solid form factor frame. Made out of quality aluminum alloy body with white finish.

ELECTRICAL

Luminaire is built with high efficacy LED package 120V-277V universal drivers.

OPTICAL SYSTEM

High performance light output perfect for high ceiling. Optic lens designed to reduce glare and improve light distribution through precision lens optics.

ENERGY SAVINGS

Over 50% energy savings compare to fluorescent fixtures. Low heat production from LED technology will require overall less maintenance and operating cost.

MOUNTING

Comes standard with V-Hooks and chains, Option available for pendant mount and surface mount kit.

CONTROLS

Option available for dimmers, occupancy sensors and daylight harvesting to maximize energy savings.

LISTING

UL Listed , DLC Premium Listed

WARRANTY

5 Years Limited Warranty, Rated for 50,000 hours (See Warranty documentation for details).

	WATTAGE	DELIVERED LUMENS	EFFICACY
2'	105W	14,175	141 lm/W
	155W	20,925	135 lm/W
	170W	22,950	137 lm/W
4'	210W	28,350	139 lm/W
	300W	40,500	133 lm/W

Based on 4000K, 82 CRI. Actual lumens may vary.

TECHNICAL SPECIFICATION

CCT	4000K/5000K
CRI	82
DIMMABLE	0-10V dimming
VOLTAGE	120V-277V
POWER FREQUENCY	50/60 Hz
POWER FACTOR	0.9
THD	20%
WORKING TEMPERATURE	-4°F ~ 104°F
STORAGE TEMPERATURE	-22°F ~ 140°F
IP RATING	Suitable for damp locations
WARRANTY	5 year limited



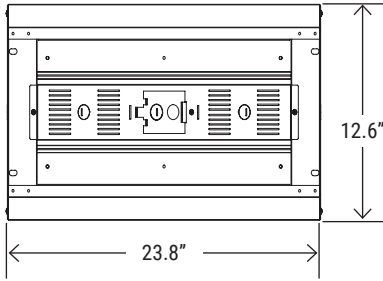
ORDERING SAMPLE: - - - - - - -

Series	Wattage	CCT
PT-LHB LED Linear High Bay Series	105W 155W 170W 210W 300W	2CCT (4000K/5000K)

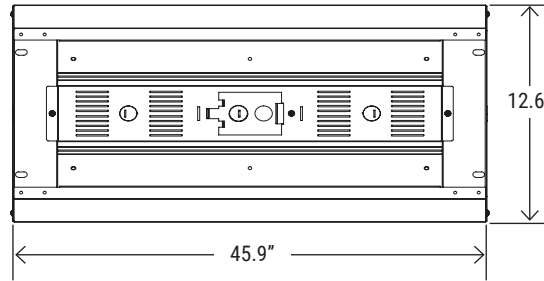
Accessories/Options				
EM Battery	Transformer	Sensor	Wireguard	Mounting
PT-EM1-15W* PT-EM1-30W**	PT-SDT-325	Blank PT-UNI2-SP-PR ELB-UNI MSH-RC2 PT-UNI-35-NDP ELB-UNI-35 MSS-RC-100	WG-HBL4-2FT WG-HBL4-4FT	Blank (Standard V-hook) PM-HBL4 SMK-HBL4

Catalog Number:	Project Name:	Note:	Date:	Type:
-----------------	---------------	-------	-------	-------

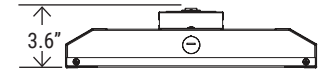
DIMENSION



2' 105W / 155W

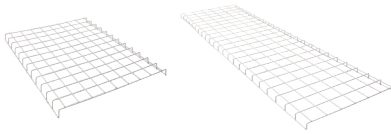


4' 170W / 210W / 300W



SIDE PROFILE

WIRE GUARD OPTION



WG-HBL4-2FT
Wire guard for 105W / 155W

WG-HBL4-4FT
Wire guard for 170W / 240W / 300W

TRANSFORMER OPTION



PT-SDT-325
Step-down Auto-transformer

EM BATTERY OPTION



PT-EM1-15W* / PT-EM1-30W**
LED Emergency Driver
**Only works with 105W, 150W (max)*
***Will work with 170W, 210W, 300W*

MOUNTING OPTION



PM-HBL4
Pendant Mount



SMK-HBL4
Surface Mount Kit

SENSOR OPTION



PT-UNI2-SP-PR
Dimmable PIR Motion Sensor with Daylight Harvesting



ELB-UNI
Elbow for UNI2-SP-PR (Required)



MSH-RC2
Intelligent Control Unit



PT-UNI-35-NDP
Dimmable PIR Motion Sensor



ELB-UNI-35
Elbow for UNI-35-NDP (Required)



MSS-RC-100
Intelligent Control Unit



CATALOG NUMBER	WATTAGE	DELIVERED LUMENS	EFFICACY	DLC PRODUCT ID	CLASSIFICATION
PT-LHB-105W-2CCT	105W	14,175	141 lm/W	S-JDT39V	PREMIUM
PT-LHB-155W-2CCT	155W	20,925	135 lm/W	S-EMZU6J	PREMIUM
PT-LHB-170W-2CCT	170W	22,950	137 lm/W	S-FAD4Z7	PREMIUM
PT-LHB-210W-2CCT	210W	28,350	139 lm/W	S-ODAZIC	PREMIUM
PT-LHB-300W-2CCT	300W	40,500	133 lm/W	S-TURHP3	PREMIUM

Based on 4000K, 82 CRI. Actual lumens may vary.

PT-LHB-105W

Wattage: 105W

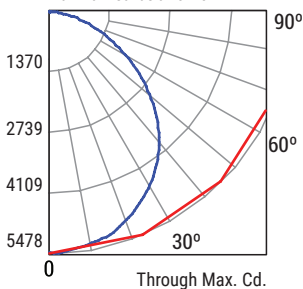
Delivered lumens: 14176

Efficacy: 136 lm/W

CCT: 5000K

CRI: 80

Maximum Candela : 5478.1



— Vertical Plane Through Horizontal Angles (90 - 270)
— Horizontal Cone Through Vertical Angle (1)

Coefficients of Utilization

pfc	20%											
	80%				70%				50%			
	70%	50%	30%	10%	70%	50%	30%	10%	50%	30%	10%	
pcc												
pw												
RCR	0	1	2	3	4	5	6	7	8	9	10	
	119	109	100	91	84	77	71	66	62	58	54	
	119	105	92	81	75	69	64	60	57	54	51	
	119	101	85	73	67	62	58	54	51	48	45	
	119	97	80	67	61	56	52	49	46	43	40	
	116	103	87	74	68	63	59	55	52	49	46	
	116	99	82	69	63	58	54	50	47	44	41	
	116	96	79	66	60	55	51	47	44	41	38	
	111	92	75	62	56	51	47	43	40	37	34	
	111	88	71	58	52	47	43	39	36	33	30	
	111	84	67	54	48	43	39	35	32	29	26	
	111	80	63	50	44	39	35	31	28	25	22	
	111	76	59	46	40	35	31	27	24	21	18	
	111	72	55	42	36	31	27	23	20	17	14	
	111	68	51	38	32	27	23	19	16	13	10	
	111	64	47	34	28	23	19	15	12	9	6	
	111	60	43	30	24	19	15	11	8	5	2	
	111	56	39	26	20	15	11	7	4	1		
	111	52	35	22	16	11	7	3	0			
	111	48	31	18	12	7	3	0				
	111	44	27	14	8	3	0					
	111	40	23	10	4	0						
	111	36	19	6	0							
	111	32	15	2								
	111	28	11									

CP Summary

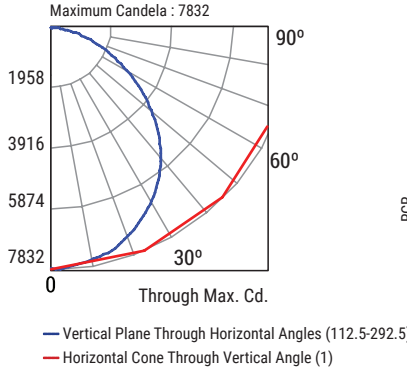
	0°	90°
0°	5457.6	5457.6
5°	5426.7	5421.0
15°	5221.5	5225.2
25°	4815.9	4795.3
35°	4242.1	4204.2
45°	3436.1	3411.2
55°	2490.5	2454.1
65°	1552.7	1497.6
75°	745.6	702.4
85°	162.7	132.3
90°	12.9	16.1

Zonal Lumen Summary

	Lumens	%Fixture
0° - 20°	1983.52	14.00
0° - 30°	4190.27	29.60
0° - 40°	6817.56	48.10
0° - 60°	11656.22	82.20
0° - 80°	13941.92	98.40
0° - 90°	14118.82	99.60

Catalog Number:	Project Name:	Note:	Date:	Type:
-----------------	---------------	-------	-------	-------

PT-LHB-155W	Wattage: 155W	Delivered lumens: 20443	Efficacy: 137 lm/W	CCT: 5000K	CRI: 80
--------------------	----------------------	--------------------------------	---------------------------	-------------------	----------------

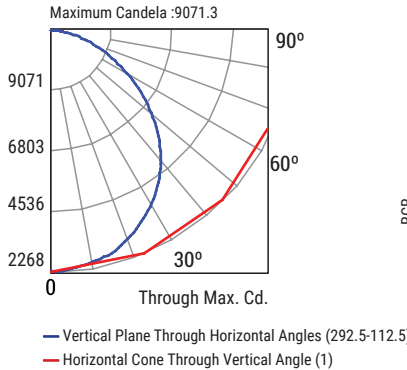


RCR	Coefficients of Utilization												
	pfc	80%				70%				50%			
		pcc	pw	70%	50%	30%	10%	70%	50%	30%	10%	50%	30%
0		119	119	119	119	116	116	116	116	111	111	111	
1		109	105	101	97	107	103	99	96	98	95	93	
2		100	92	86	80	97	90	84	79	87	81	77	
3		91	81	73	67	89	80	72	67	77	70	65	
4		84	72	64	57	82	71	63	57	68	62	56	
5		77	65	56	50	75	64	55	49	61	54	49	
6		71	58	50	43	69	57	49	43	56	48	43	
7		66	53	44	38	65	52	44	38	51	43	38	
8		62	48	40	34	60	48	40	34	46	39	34	
9		58	44	36	31	56	44	36	31	43	36	31	
10		54	41	33	28	53	41	33	28	40	33	28	

CP Summary		
	0°	90°
0°	7810.3	7810.3
5°	7768.9	7753.2
15°	7490.2	7485.3
25°	6918.0	6914.7
35°	6138.4	6101.0
45°	4979.2	4956.4
55°	3583.7	3525.2
65°	2195.6	2088.0
75°	1038.5	964.1
85°	224.0	184.3
90°	16.4	12.8

Zonal Lumen Summary		
	Lumens	%Fixture
0° - 20°	2845.31	13.90
0° - 30°	6029.64	29.50
0° - 40°	9847.17	48.20
0° - 60°	16883.48	82.60
0° - 80°	20112.90	98.40
0° - 90°	20360.50	99.60

PT-LHB-170W	Wattage: 170W	Delivered lumens: 23302	Efficacy: 139 lm/W	CCT: 5000K	CRI: 80
--------------------	----------------------	--------------------------------	---------------------------	-------------------	----------------

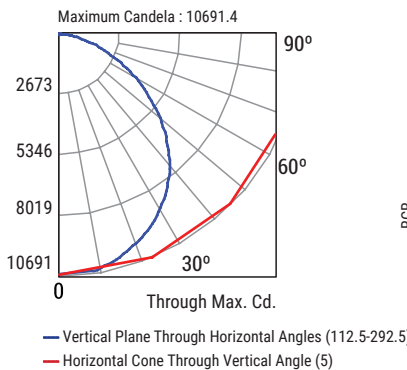


RCR	Coefficients of Utilization												
	pfc	80%				70%				50%			
		pcc	pw	70%	50%	30%	10%	70%	50%	30%	10%	50%	30%
0		119	119	119	119	116	116	116	116	111	111	111	
1		109	105	101	97	107	103	99	96	98	95	93	
2		100	92	86	80	97	90	84	79	87	81	77	
3		91	81	73	67	89	80	72	67	77	70	65	
4		84	72	64	57	82	71	63	57	68	62	56	
5		77	65	56	50	75	64	55	49	61	54	49	
6		71	58	50	43	69	57	49	43	56	48	43	
7		66	53	44	38	65	52	44	38	51	43	38	
8		62	48	40	34	60	48	40	34	46	39	34	
9		58	44	36	31	56	44	36	31	43	36	31	
10		54	41	33	28	53	41	33	28	40	33	28	

CP Summary		
	0°	90°
0°	8962.5	8962.5
5°	8904.9	9024.9
15°	8593.8	8652.0
25°	7925.8	7908.7
35°	6958.6	6878.7
45°	5654.6	5467.2
55°	4135.3	3934.8
65°	2597.2	2390.4
75°	1256.0	1111.4
85°	257.0	191.4
90°	15.5	7.4

Zonal Lumen Summary		
	Lumens	%Fixture
0° - 20°	3283.5	14.10
0° - 30°	6934.18	29.80
0° - 40°	11264.4	48.30
0° - 60°	19180.00	82.30
0° - 80°	22938.49	98.40
0° - 90°	23223.4	99.70

PT-LHB-215W	Wattage: 210W	Delivered lumens: 27924	Efficacy: 136 lm/W	CCT: 5000K	CRI: 80
--------------------	----------------------	--------------------------------	---------------------------	-------------------	----------------

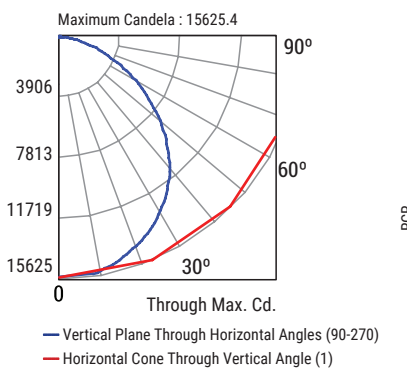


RCR	Coefficients of Utilization												
	pfc	80%				70%				50%			
		pcc	pw	70%	50%	30%	10%	70%	50%	30%	10%	50%	30%
0		119	119	119	119	116	116	116	116	111	111	111	
1		109	105	101	97	107	103	99	96	98	95	93	
2		100	92	85	80	97	90	84	79	87	81	77	
3		91	81	73	67	89	80	72	66	77	70	65	
4		84	72	64	57	82	71	63	57	68	61	56	
5		77	65	56	49	75	63	55	49	61	54	49	
6		71	58	50	43	69	57	49	43	55	48	43	
7		66	53	44	38	65	52	44	38	51	43	38	
8		62	48	40	34	60	48	40	34	46	39	34	
9		58	44	36	31	56	44	36	31	43	36	31	
10		54	41	33	28	53	40	33	28	39	33	28	

CP Summary		
	0°	90°
0°	10546.280	10546.280
5°	10483.700	10640.400
15°	10177.100	10241.600
25°	9466.600	9448.500
35°	8390.500	8322.500
45°	6902.300	6736.400
55°	5097.900	4909.700
65°	3169.100	3021.300
75°	1534.800	1420.700
85°	353.400	283.300
90°	31.900	25.100

Zonal Lumen Summary		
	Lumens	%Fixture
0° - 20°	3873.96	13.90
0° - 30°	8206.24	29.40
0° - 40°	13384.94	47.90
0° - 60°	22960.76	82.20
0° - 80°	27472.52	98.40
0° - 90°	27829.60	99.70

PT-LHB-300W	Wattage: 300W	Delivered lumens: 40310	Efficacy: 135 lm/W	CCT: 5000K	CRI: 80
--------------------	----------------------	--------------------------------	---------------------------	-------------------	----------------



RCR	Coefficients of Utilization												
	pfc	80%				70%				50%			
		pcc	pw	70%	50%	30%	10%	70%	50%	30%	10%	50%	30%
0		119	119	119	119	116	116	116	116	111	111	111	
1		109	105	101	97	107	103	99	95	98	95	92	
2		100	92	85	80	97	90	84	79	86	81	77	
3		91	81	73	67	89	80	72	66	76	70	65	
4		84	72	63	57	82	71	63	57	68	61	56	
5		77	65	56	49	75	63	55	49	61	54	48	
6		71	58	49	43	69	57	49	43	55	48	43	
7		66	53	44	38	65	52	44	38	50	43	38	
8		62	48	40	34	60	48	40	34	46	39	34	
9		58	44	36	31	56	44	36	31	43	35	31	
10		54	41	33	28	53	40	33	28	39	33	28	

CP Summary		
	0°	90°
0°	15478.8	15478.8
5°	15310.2	15443.6
15°	14776.2	14803.9
25°	13636.2	13570.9
35°	12043.7	11827.9
45°	9717.7	9584.2
55°	7111.7	6932.0
65°	4509.6	4302.6
75°	2195.8	2075.9
85°	470.2	410.6
90°	35.9	43.1

Zonal Lumen Summary		
	Lumens	%Fixture
0° - 20°	5619.51	13.90
0° - 30°	11867.25	29.40
0° - 40°	19289.54	47.90
0° - 60°	33001.68	81.90
0° - 80°	39638.53	98.30
0° - 90°	40167.22	99.60