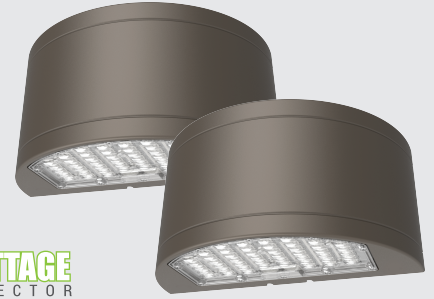
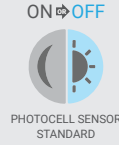


Catalog Number:	Project Name:	Note:	Date:	Type:
-----------------	---------------	-------	-------	-------

Designed for durability and versatility, the IP65 Rated The PT-WPR Series Wall Pack is ideal for wet locations such as processing workshops, storage warehouses, steel mills, toll booths, waiting rooms, and railway station platforms. This robust wall pack ensures reliable performance and superior illumination in challenging environments.

Ideal use for warehouses, walkways, building entry ways, parking lots, retail exteriors and shopping malls.



**CONSTRUCTION**

Made from die-cast aluminum, offering excellent heat dissipation and long-lasting quality. The IP65 rating ensures protection against water and dust, making it perfect for outdoor and industrial settings.

**ELECTRICAL**

Compatible with AC120-277V and AC120-347V for flexibility in various applications. Equipped with 0-10V dimming to provide adjustable lighting levels.

**OPTICAL SYSTEM**

PC lens designed to reduce glare and improve over-all light distribution through precision formed LED optics.

**ENERGY SAVINGS**

Over 50% energy savings than traditional lamp fixtures, low heat productions requires less maintenance and operation cost.

**LISTING**

UL Listed, DLC Listed, RoHS, IP65 rated

**WARRANTY**

5 year Limited Warranty

WATTAGE	DELIVERED LUMENS	EFFICACY
24W, 32W, 40W	4,320	135 lm/W
48W, 64W, 80W	8,640	135 lm/W

*Based on Max Wattage and @ 4000K setting. Actual lumens may vary. For complete results, see next page.*

**TECHNICAL SPECIFICATION**

CCT	3000K/4000K/5000K
CRI	80+
DIMMABLE	0-10V dimmable
SENSOR	Integrated Photocell
VOLTAGE	120V-277V
POWER FREQUENCY	50/60 Hz
POWER FACTOR	>0.9
WORKING TEMPERATURE	-40°F ~ +104°F
IP RATING	IP65 Wet Location
LIFE SPAN	50,000 hrs
WARRANTY	5 year limited



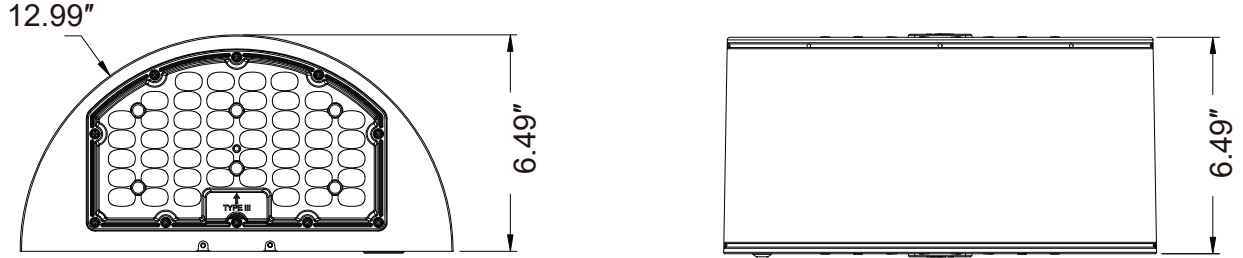
ORDERING SAMPLE:

-  -

Series	Wattage	CCT
<b>PT-WPR</b> Round Wall Pack Series	<b>MW</b> (24W/32W/40W) <b>HW</b> (48W/64W/80W)	<b>3CP</b> (3000K/4000K/5000K)

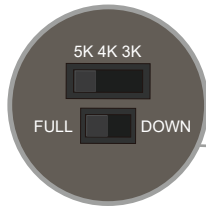
Catalog Number:	Project Name:	Note:	Date:	Type:
-----------------	---------------	-------	-------	-------

**DIMENSION**

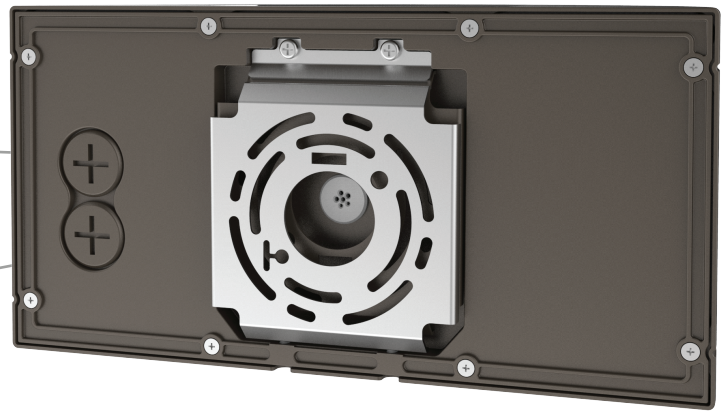
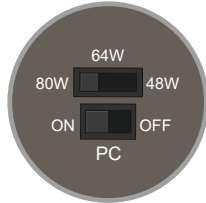


**WATTAGE AND CCT SET-UP**

DIP Switch for  
CCT & Down /  
Full Light Control



DIP Switch for  
Wattage & Photocell



CATALOG NUMBER	WATTAGE	DELIVERED LUMENS	EFFICACY	CATALOG NUMBER	WATTAGE	DELIVERED LUMENS	EFFICACY
PT-WPR-MW-3CP	24W	3702 @ 3000K	154 lm/W	PT-WPR-HW-3CP	48W	7553 @ 3000K	158 lm/W
		3831 @ 4000K	164 lm/W			7833 @ 4000K	169 lm/W
		3703 @ 5000K	155 lm/W			7481 @ 5000K	157 lm/W
	32W	4873 @ 3000K	149 lm/W		64W	9770 @ 3000K	151 lm/W
		5133 @ 4000K	162 lm/W			10280 @ 4000K	165 lm/W
		4882 @ 5000K	149 lm/W			9756 @ 5000K	150 lm/W
	40W	5950 @ 3000K	143 lm/W		80W	11648 @ 3000K	144 lm/W
		6354 @ 4000K	159 lm/W			12442 @ 4000K	160 lm/W
		6044 @ 5000K	144 lm/W			11798 @ 5000K	144 lm/W