

| | | | | |
|-----------------|---------------|-------|-------|-------|
| Catalog Number: | Project Name: | Note: | Date: | Type: |
|-----------------|---------------|-------|-------|-------|

DESCRIPTION

The LSFA series is a slim, light weight and energy efficient luminaire that is equipped with 0-10V dimming capability and a field-adjustable wattage selector.

The fixture includes standard surface mounting kit excellent for utility applications such as parking garage, warehouse, hallway, storage facility, restrooms and stairwell.



Available in
4'/8'

WATTAGE
SELECTOR

CONSTRUCTION

The luminaire features matte white finish and galvanized housing. T-bar mounting hole make it easy for installation, and multiple knock-outs provide options for occupancy sensor.

OPTICAL SYSTEM

Luminaire is built with the highest quality driver that is Universal Voltage (120V-277V), uses long lasting, high-efficient LED package.

LENS

Frosted lens diffuser reduces glare and improves overall light output.

SENSOR READY

Motion sensor and daylight harvesting sensor available, can do factory installation.

ENERGY SAVINGS

Over 50% energy savings than traditionally fluorescent fixtures, low heat productions requires less maintenance and operation cost.

LISTING

UL Listed, DLC Premium Listed

WARRANTY

5 year Limited Warranty, Rated for 50,000 hours.
See Warranty documentation for details.

| WATTAGE | DELIVERED LUMENS | EFFICACY |
|-----------------------|------------------|----------|
| 4' 25W/30W/40W | 5440 @ 4000K | 136 lm/W |
| 8' 55W/60W/65W | 8580 @ 4000K | 132 lm/W |

Based on the highest wattage @ 4000K default setting, 80 CRI. Actual lumens may vary.

TECHNICAL SPECIFICATION

| | |
|---------------------|-----------------------------------|
| CCT | 4000K, 5000K |
| CRI | 80+ |
| DIMMABLE | 0-10V dimming |
| BEAM ANGLE | 120° |
| VOLTAGE | 120V-277V |
| POWER FREQUENCY | 50/60 Hz |
| POWER FACTOR | >0.9 |
| THD | ≤10% |
| WORKING TEMPERATURE | -40°F ~ 122°F |
| STORAGE TEMPERATURE | -40°F ~ 158°F |
| IP RATING | IP44, Suitable for damp locations |
| WARRANTY | 5 year limited |

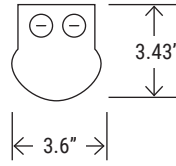
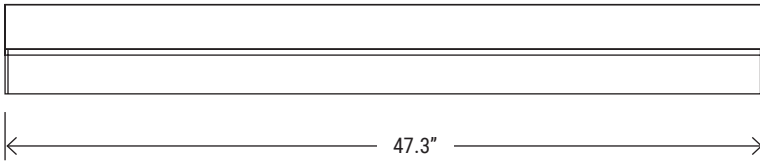


ORDERING SAMPLE: - - - - -

| Series | Wattage | CCT | Accessories/Options | | |
|---|----------------|----------------------------|---|---|---|
| | | | EM Battery | Sensor | Mounting |
| PT-LSFA LED Linear Strip Field-Adjustable | 4FT (4-footer) | 40K (4000K) 50K (5000K) | ___ Blank PT-EMN-08W-050 PT-EMN-15W-050 | ___ Blank PT-UNI2-SP-PR ELB-UNI (Required) MSH-RC2 PT-UNI-35-NDP ELB-UNI-35 (Required) MSS-RC-100 | ___ Blank (Standard surface mount) A-CBL CON-LSFA |
| | 8FT (8-footer) | 40K (4000K) 50K (5000K) | | | |

| | | | | |
|-----------------|---------------|-------|-------|-------|
| Catalog Number: | Project Name: | Note: | Date: | Type: |
|-----------------|---------------|-------|-------|-------|

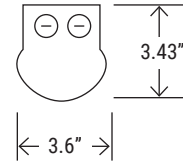
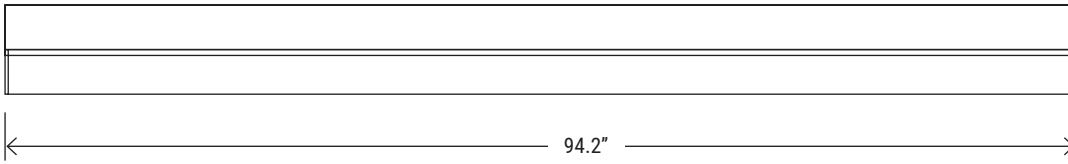
DIMENSION



QTY/BOX

6

4' PT-LSFA Series

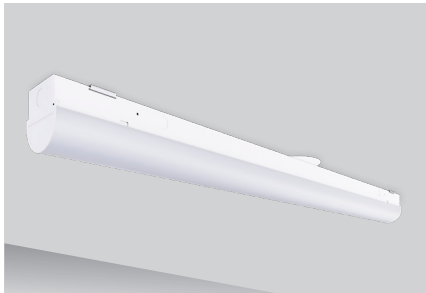


QTY/BOX

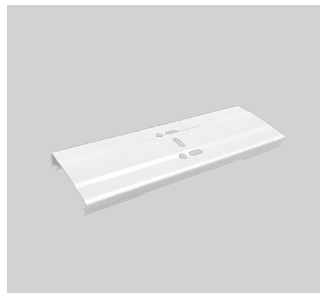
4

8' PT-LSFA Series

MOUNTING OPTION



SM
Surface mount (Standard)
Comes with j-box cover



CON-LSFA
Connector



A-CBL
Hanging wire for strip light

EM BATTERY OPTION



PT-EMN-08W-050 (4FT)
PT-EMN-15W-050 (8FT)
LED Emergency Driver

SENSOR OPTION



PT-UNI2-SP-PR
Dimmable PIR
Motion Sensor
with Daylight
Harvesting

ELB-UNI
Elbow for
UNI2-SP-PR
(Required)



MSH-RC2
Intelligent
Control Unit



PT-UNI-35-NDP
Dimmable PIR
Motion Sensor

ELB-UNI-35
Elbow for
UNI-35-NDP
(Required)



MSS-RC-100
Intelligent
Control Unit

| | | | | |
|-----------------|---------------|-------|-------|-------|
| Catalog Number: | Project Name: | Note: | Date: | Type: |
|-----------------|---------------|-------|-------|-------|

PHOTOMETRY

PT-LSFA-4FT

Wattage: **40W**

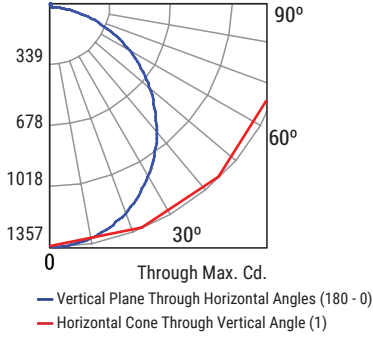
Delivered lumens: **5148**

Efficacy: **132 lm/W**

CCT: **3500K**

CRI: **80**

Maximum Candela : 1356.8



| RCR | Coefficients of Utilization | | | | | | | | | | |
|-----|-----------------------------|-----|-----|-----|-----|-----|-----|-----|-----|-----|-----|
| | 20% | | | | | | | | | | |
| | 80% | | | 70% | | | | 50% | | | |
| 0 | 10 | 20 | 30 | 40 | 50 | 60 | 70 | 80 | 90 | 100 | 110 |
| 0 | 116 | 116 | 116 | 116 | 112 | 112 | 112 | 112 | 105 | 105 | 105 |
| 1 | 104 | 98 | 93 | 88 | 100 | 94 | 90 | 85 | 88 | 84 | 81 |
| 2 | 93 | 84 | 76 | 70 | 90 | 81 | 74 | 68 | 76 | 66 | 62 |
| 3 | 85 | 73 | 64 | 57 | 81 | 71 | 63 | 56 | 66 | 59 | 53 |
| 4 | 77 | 64 | 55 | 48 | 74 | 62 | 54 | 47 | 58 | 41 | 45 |
| 5 | 71 | 57 | 48 | 41 | 68 | 55 | 47 | 40 | 52 | 44 | 39 |
| 6 | 65 | 51 | 42 | 35 | 63 | 50 | 41 | 35 | 47 | 39 | 34 |
| 7 | 60 | 46 | 37 | 31 | 58 | 45 | 37 | 31 | 42 | 35 | 38 |
| 8 | 56 | 42 | 34 | 28 | 54 | 41 | 33 | 27 | 39 | 32 | 26 |
| 9 | 52 | 39 | 30 | 25 | 50 | 38 | 30 | 24 | 36 | 29 | 24 |
| 10 | 49 | 36 | 28 | 22 | 47 | 35 | 27 | 22 | 33 | 26 | 21 |

| CP Summary | 0° | | 90° | |
|------------|--------|--------|-----|-----|
| | 0° | 90° | 0° | 90° |
| 0° | 1350.6 | 1350.6 | | |
| 5° | 1350.2 | 1343.6 | | |
| 15° | 1287.6 | 1308.2 | | |
| 25° | 1177.7 | 1240.3 | | |
| 35° | 1027.3 | 1144.8 | | |
| 45° | 843.4 | 1025.4 | | |
| 55° | 642.3 | 893.3 | | |
| 65° | 426.2 | 755.3 | | |
| 75° | 220.6 | 621.4 | | |
| 85° | 47.9 | 495.9 | | |
| 90° | 8.2 | 432.2 | | |

| Zonal Lumen Summary | Lumens | | %Fixture |
|---------------------|----------|-----------|----------|
| | 0° - 20° | 20° - 90° | |
| 0° - 20° | 494.12 | 9.60 | |
| 0° - 30° | 1051.2 | 20.40 | |
| 0° - 40° | 1729.79 | 33.60 | |
| 0° - 60° | 3141.15 | 61.00 | |
| 0° - 80° | 4207.16 | 81.70 | |
| 0° - 90° | 4543.02 | 88.30 | |

PT-LSFA-4FT

Wattage: **40W**

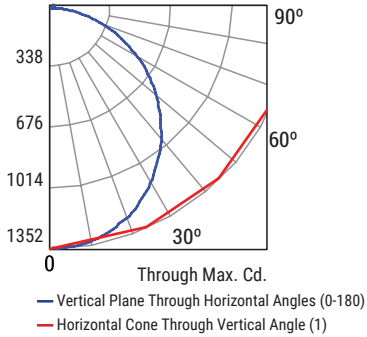
Delivered lumens: **5136**

Efficacy: **132 lm/W**

CCT: **4000K**

CRI: **80**

Maximum Candela : 1352.1



| RCR | Coefficients of Utilization | | | | | | | | | | |
|-----|-----------------------------|-----|-----|-----|-----|-----|-----|-----|-----|-----|-----|
| | 20% | | | | | | | | | | |
| | 80% | | | 70% | | | | 50% | | | |
| 0 | 10 | 20 | 30 | 40 | 50 | 60 | 70 | 80 | 90 | 100 | 110 |
| 0 | 116 | 116 | 116 | 116 | 112 | 112 | 112 | 112 | 105 | 105 | 105 |
| 1 | 104 | 98 | 93 | 88 | 100 | 94 | 90 | 85 | 88 | 84 | 81 |
| 2 | 93 | 84 | 76 | 70 | 89 | 81 | 74 | 68 | 76 | 70 | 65 |
| 3 | 85 | 73 | 64 | 57 | 81 | 71 | 62 | 56 | 66 | 59 | 53 |
| 4 | 77 | 64 | 55 | 48 | 74 | 62 | 54 | 47 | 58 | 51 | 45 |
| 5 | 71 | 57 | 48 | 41 | 68 | 55 | 47 | 40 | 52 | 44 | 39 |
| 6 | 65 | 51 | 42 | 35 | 62 | 50 | 41 | 35 | 47 | 39 | 34 |
| 7 | 60 | 46 | 37 | 31 | 58 | 45 | 37 | 31 | 42 | 35 | 30 |
| 8 | 56 | 42 | 34 | 28 | 54 | 41 | 33 | 27 | 39 | 31 | 26 |
| 9 | 52 | 39 | 30 | 25 | 50 | 38 | 30 | 24 | 36 | 29 | 24 |
| 10 | 49 | 36 | 28 | 22 | 47 | 35 | 27 | 22 | 33 | 26 | 21 |

| CP Summary | 0° | | 90° | |
|------------|--------|--------|-----|-----|
| | 0° | 90° | 0° | 90° |
| 0° | 1343.8 | 1343.8 | | |
| 5° | 1344.5 | 1334.6 | | |
| 15° | 1286.5 | 1291.7 | | |
| 25° | 1177.3 | 1213.8 | | |
| 35° | 1028.0 | 1109.8 | | |
| 45° | 847.2 | 992.8 | | |
| 55° | 647.4 | 856.6 | | |
| 65° | 436.3 | 722.2 | | |
| 75° | 224.9 | 588.5 | | |
| 85° | 50.6 | 467.7 | | |
| 90° | 9.1 | 407.7 | | |

| Zonal Lumen Summary | Lumens | | %Fixture |
|---------------------|----------|-----------|----------|
| | 0° - 20° | 20° - 90° | |
| 0° - 20° | 494.12 | 9.60 | |
| 0° - 30° | 1051.2 | 20.40 | |
| 0° - 40° | 1729.79 | 33.60 | |
| 0° - 60° | 3141.15 | 61.00 | |
| 0° - 80° | 4207.16 | 81.70 | |
| 0° - 90° | 4543.02 | 88.30 | |

PT-LSFA-4FT

Wattage: **40W**

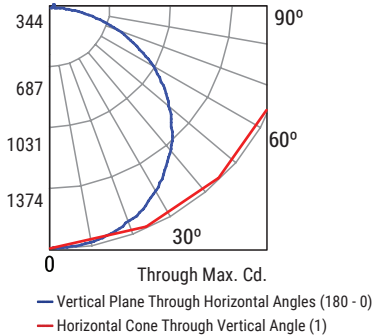
Delivered lumens: **5228**

Efficacy: **133 lm/W**

CCT: **5000K**

CRI: **80**

Maximum Candela : 1374.2



| RCR | Coefficients of Utilization | | | | | | | | | | |
|-----|-----------------------------|-----|-----|-----|-----|-----|-----|-----|-----|-----|-----|
| | 20% | | | | | | | | | | |
| | 80% | | | 70% | | | | 50% | | | |
| 0 | 10 | 20 | 30 | 40 | 50 | 60 | 70 | 80 | 90 | 100 | 110 |
| 0 | 116 | 116 | 116 | 116 | 112 | 112 | 112 | 112 | 105 | 105 | 105 |
| 1 | 104 | 98 | 93 | 88 | 100 | 94 | 90 | 85 | 88 | 84 | 81 |
| 2 | 93 | 84 | 76 | 70 | 89 | 81 | 74 | 68 | 76 | 70 | 65 |
| 3 | 85 | 73 | 64 | 57 | 81 | 71 | 62 | 56 | 66 | 59 | 53 |
| 4 | 77 | 64 | 55 | 48 | 74 | 62 | 54 | 47 | 58 | 51 | 45 |
| 5 | 71 | 57 | 48 | 41 | 68 | 55 | 47 | 40 | 52 | 44 | 39 |
| 6 | 65 | 51 | 42 | 35 | 62 | 50 | 41 | 35 | 47 | 39 | 34 |
| 7 | 60 | 46 | 37 | 31 | 58 | 45 | 37 | 31 | 42 | 35 | 30 |
| 8 | 56 | 42 | 34 | 28 | 54 | 41 | 33 | 27 | 39 | 31 | 26 |
| 9 | 52 | 39 | 30 | 25 | 50 | 38 | 30 | 24 | 36 | 29 | 24 |
| 10 | 49 | 36 | 28 | 22 | 47 | 35 | 27 | 22 | 33 | 26 | 21 |

| CP Summary | 0° | | 90° | |
|------------|--------|--------|-----|-----|
| | 0° | 90° | 0° | 90° |
| 0° | 1366.2 | 1366.2 | | |
| 5° | 1363.7 | 1358.9 | | |
| 15° | 1303.9 | 1323.9 | | |
| 25° | 1195.3 | 1255.6 | | |
| 35° | 1044.5 | 1158.5 | | |
| 45° | 843.4 | 1025.4 | | |
| 55° | 650.5 | 904.8 | | |
| 65° | 441.3 | 765.9 | | |
| 75° | 224.2 | 631.6 | | |
| 85° | 48.9 | 502.5 | | |
| 90° | 8.0 | 439.5 | | |

| Zonal Lumen Summary | Lumens | | %Fixture |
|---------------------|----------|-----------|----------|
| | 0° - 20° | 20° - 90° | |
| 0° - 20° | 499.92 | 9.60 | |
| 0° - 30° | 1063.86 | 20.30 | |
| 0° - 40° | 1751.29 | 33.50 | |
| 0° - 60° | 3182.46 | 60.90 | |
| 0° - 80° | 4265.30 | 81.60 | |
| 0° - 90° | 4607.93 | 88.10 | |



DLC LISTING

| CATALOG NUMBER | WATTAGE | DELIVERED LUMENS | EFFICACY | DLC PRODUCT ID | CLASSIFICATION |
|-----------------|---------|------------------|----------|----------------|----------------|
| PT-LSFA-4FT-40K | 40W | 5440 | 136 lm/W | PLONTCGXEHI | PREMIUM |
| PT-LSFA-4FT-50K | | 5480 | 137 lm/W | PLVBIW5DDHI5 | PREMIUM |
| PT-LSFA-8FT-40K | 65W | 8580 | 132 lm/W | S-4PJNMX | PREMIUM |
| PT-LSFA-8FT-50K | | 8645 | 133 lm/W | S-2L1H84 | PREMIUM |

Based on the highest wattagesetting, 80 CRI. Actual lumens may vary.

| | | | | |
|-----------------|---------------|-------|-------|-------|
| Catalog Number: | Project Name: | Note: | Date: | Type: |
|-----------------|---------------|-------|-------|-------|

MOTION SENSORS



PT-MS-35-BT
Bluetooth Audiojack Sensor



PT-BTN
Bluetooth Node



PT-A-EMS-MW
Microwave Eco Sensor



PT-MS-21-BT-JB
Bluetooth Dual Tech Ceiling Sensor

CONTROLLERS



PT-BT-6
Bluetooth Fixture Sensor



PT-BTC-EM
Bluetooth EM Controller



PT-RTC-D-BT
Bluetooth Real Time Clock/
Energy Monitoring USB-A
Dongle



PT-GTB-D-BT
Bluetooth Gateway Bridge
USB-A Dongle



WALL SWITCHES



PT-5WS-BT-B
Battery 5 Button Wall Switch



PT-3WS-BT-B
Battery 3 Button Wall Switch



PT-3WS-BT-A
AC 3 Button Wall Switch



PT-1WS-MS-BT-A
PIR Sensor Wall Switch