

INDUSTRIAL AND HIGH-COMMERCIAL LIGHTING MANUFACTURER

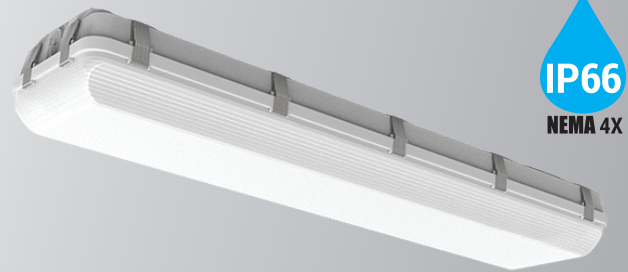
CLVS-WD Series

4' Wide Style Vapor-Seal LED Luminaire



The CLVS Vapor-Seal series offers an industry-leading performance with deep energy savings and continuous dimming. This fixture is manufactured and designed using a gasketed enclosure to protect against dust, humidity and liquid spray. Easy installation for both surface-mount and suspended mount.

Perfect application for factories, tunnels, car washes, laboratories, cold storage, food processing and for vessels.



CONSTRUCTION

Polycarbonate housing, frosted lens, and stain-less clips offer protection against dust, humidity and water spray. Environmental-friendly powder coat painted reflector. Compact, slick profile design makes it easy for installation.

ELECTRICAL

Luminaire is built with the highest quality driver that is universal voltage 120-277V 50/60Hz, Class P and Class 2 with 2kV Surge Protection, uses highly-efficient LED packages to ensure cool temperatures for long lasting life span.

OPTICAL SYSTEM

Long life and high-efficiency surface mount LEDs. 100,000-hour LED lifespan based on LM-80 results and TM-21 calculations.

DIMMING

Continuous dimming (0-10V) comes standard. Compatible with dimmers, sensors and controls for deeper energy-savings.

MOUNTING

V-hooks (included), surface mount, 45° corner mount, and junction box.

ENERGY SAVINGS

Over 50% energy savings than traditionally fluorescent fixtures, low heat productions requires less maintenance and operation cost.

LISTING

UL Listed, IP66 Rated, NEMA 4X, NSF, RoHS

WARRANTY

5 year Limited Warranty

	WATTAGE	DELIVERED LUMENS	EFFICACY
4'	150W	20,400 @ 5000K	136 lm/W
	200W	27,200 @ 5000K	136 lm/W

TECHNICAL SPECIFICATION

CCT	5000K
CRI	80+
DIMMABLE	0-10V dimming
BEAM ANGLE	110°
VOLTAGE	120V-277V
POWER FREQUENCY	50/60 Hz
POWER FACTOR	>0.9
THD	≤10%
TEMPERATURE RATED	-40°F ~ 122°F
IP RATING	IP65
WARRANTY	5 year limited

ORDERING SAMPLE:

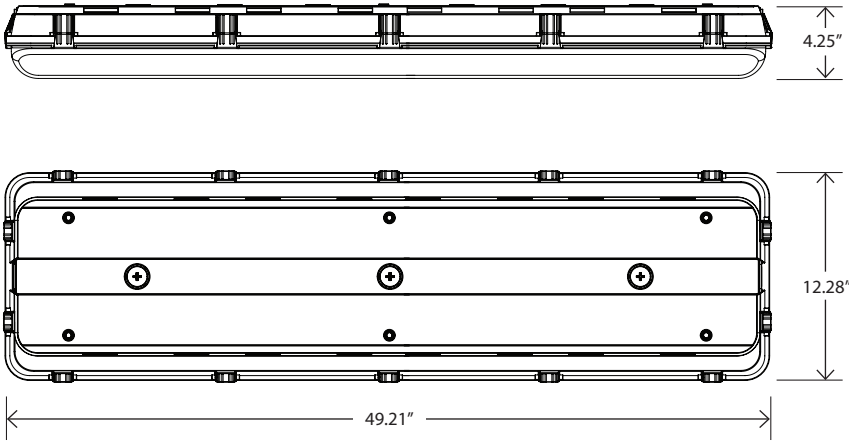
CLVS	-	WD	-	4FT	-	150W	-	50K	-	VH	-		-	
Series		Style		Size		Wattage		CCT		Mounting		EM Battery		Options
CLVS Vapor-Seal Series		WD- Wide		4FT - 4'		150W 200W		50K - 5000K		VH - V-Hooks (included) SM - Surface Mount		PT-EMN - EM Battery		MSS-TR - Motion Sensor MSS-RC-100 - Remote Control

Catalog Number:	Note:
Project Name:	Type:

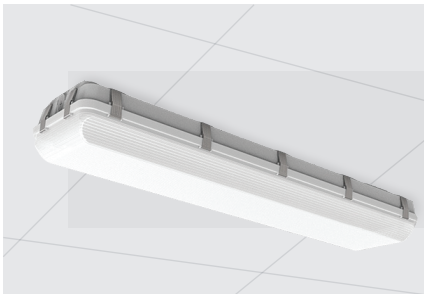
INDUSTRIAL AND HIGH-COMMERCIAL LIGHTING MANUFACTURER

CLVS-WD SERIES

DIMENSIONS



MOUNTING OPTIONS



SM
Surface mount
(Included)



V-HOOK
Suspended Mount (Included)



A-CBL
Aircraft Cable
(Chain or cable sold separate)

MOTION SENSORS



MSS-TR
Microwave Bi-Level
Motion Sensor



MSS-RC-100
Motion Sensor Remote Control
(Needed to program the motion sensor)

EM BATTERY OPTION



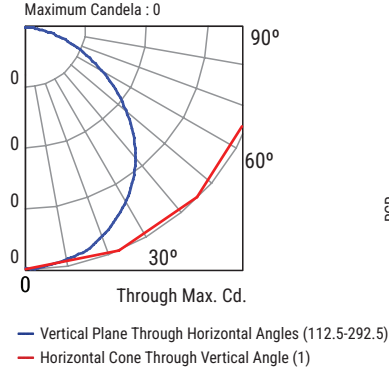
PT-EMN SERIES
Low Voltage EM
Battery Back-up

INDUSTRIAL AND HIGH-COMMERCIAL LIGHTING MANUFACTURER

CLVS-WD SERIES

PHOTOMETRICS

CLVS-4FT	Wattage: 50W	Delivered lumens 6650	Efficacy: 133 lm/W	CCT: 5000K	CRI: 80
----------	--------------	-----------------------	--------------------	------------	---------

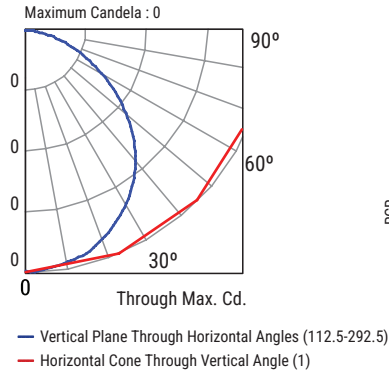


RCR	Coefficients of Utilization											
	20%											
	80%				70%				50%			
0	pw	70%	50%	30%	10%	70%	50%	30%	10%	50%	30%	10%
0	119	119	119	119	116	116	116	116	111	111	111	111
1	109	105	101	97	107	103	99	96	98	95	93	93
2	100	92	86	80	97	90	84	79	87	81	77	77
3	91	81	73	67	89	80	72	67	77	70	65	65
4	84	72	64	57	82	71	63	57	68	62	56	56
5	77	65	56	50	75	64	55	49	61	54	49	49
6	71	58	50	43	69	57	49	43	56	48	43	43
7	66	53	44	38	65	52	44	38	51	43	38	38
8	62	48	40	34	60	48	40	34	46	39	34	34
9	58	44	36	31	56	44	36	31	43	36	31	31
10	54	41	33	28	53	41	33	28	40	33	28	28

CP Summary		
	0°	90°
0°	0	0
5°	0	0
15°	0	0
25°	0	0
35°	0	0
45°	0	0
55°	0	0
65°	0	0
75°	0	0
85°	0	0
90°	0	0

Zonal Lumen Summary		
	Lumens	%Fixture
0° - 20°	0	0
0° - 30°	0	0
0° - 40°	0	0
0° - 60°	0	0
0° - 80°	0	0
0° - 90°	0	0

CLVS-4FT	Wattage: 50W	Delivered lumens 6650	Efficacy: 133 lm/W	CCT: 5000K	CRI: 80
----------	--------------	-----------------------	--------------------	------------	---------



RCR	Coefficients of Utilization											
	20%											
	80%				70%				50%			
0	pw	70%	50%	30%	10%	70%	50%	30%	10%	50%	30%	10%
0	119	119	119	119	116	116	116	116	111	111	111	111
1	109	105	101	97	107	103	99	96	98	95	93	93
2	100	92	86	80	97	90	84	79	87	81	77	77
3	91	81	73	67	89	80	72	67	77	70	65	65
4	84	72	64	57	82	71	63	57	68	62	56	56
5	77	65	56	50	75	64	55	49	61	54	49	49
6	71	58	50	43	69	57	49	43	56	48	43	43
7	66	53	44	38	65	52	44	38	51	43	38	38
8	62	48	40	34	60	48	40	34	46	39	34	34
9	58	44	36	31	56	44	36	31	43	36	31	31
10	54	41	33	28	53	41	33	28	40	33	28	28

CP Summary		
	0°	90°
0°	0	0
5°	0	0
15°	0	0
25°	0	0
35°	0	0
45°	0	0
55°	0	0
65°	0	0
75°	0	0
85°	0	0
90°	0	0

Zonal Lumen Summary		
	Lumens	%Fixture
0° - 20°	0	0
0° - 30°	0	0
0° - 40°	0	0
0° - 60°	0	0
0° - 80°	0	0
0° - 90°	0	0



CATALOG NUMBER	WATTAGE	DELIVERED LUMENS	EFFICACY	DLC PRODUCT ID	CLASSIFICATION
CLVS-WD-4FT-150W-50K	150W	xx	133 lm/W	XXX	PREMIUM
CLVS-WD-84FT-200W-50K	200W	xx	133 lm/W	XXX	PREMIUM

Catalog Number:	Project Name:	Note:	Date:	Type:
-----------------	---------------	-------	-------	-------

MOTION SENSORS



PT-BTN
Bluetooth Node



PT-A-EMS-MW
Microwave Eco Sensor



PT-MS-21-BT-JB
Bluetooth Dual Tech
Ceiling Sensor

CONTROLLERS



PT-BT-6
Bluetooth Fixture Sensor



PT-BTC-EM
Bluetooth EM Controller



PT-RTC-D-BT
Bluetooth Real Time Clock/
Energy Monitoring USB-A
Dongle



PT-GTB-D-BT
Bluetooth Gateway Bridge
USB-A Dongle



WALL SWITCHES



PT-5WS-BT-B
Battery 5 Button Wall Switch



PT-3WS-BT-B
Battery 3 Button Wall Switch



PT-3WS-BT-A
AC 3 Button Wall Switch



PT-1WS-MS-BT-A
PIR Sensor Wall Switch