

# OUR PT-AL1 IS ILLUMINATING THE PATH!

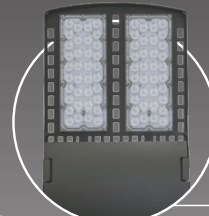


ENERGY EFFICIENT. ADVANCED OPTICAL CONTROL.

**IN STOCK**



The ultra slim profile deliver enhanced performance for general area lighting applications.



The robust die-cast housing provides excellent thermal management for longer life and can withstand everyday harsh outdoor environments.



Ideal use for parking lots, car dealerships, walkways, school campuses, shopping centers and industrial areas



The tool-less access to driver makes it easy for maintenance and value add accessories.

• ETL Listed • up to 151 lm/W • 100V-277V / 480V • IP65 • 0-10V dimming driver • CRI>80 • Type 3 •

### WHITE Finish

### BRONZE Finish

Cat. No.	Watts	Lumens	DLC Product ID
PT-AL1-100W-50F-LVSG-W	100W	15,526	PHTYEZUY
PT-AL1-150W-50F-LVSG-W	150W	24,515	PE58Q9EH
PT-AL1-200W-50F-LVSG-W	200W	31,218	PJPQ525W
PT-AL1-240W-50F-LVSG-W*	240W	35,569	P7RH8NAF
PT-AL1-300W-50F-LVSG-W	300W	45,313	P5FZ3B32

Cat. No.	Watts	Lumens	DLC Product ID
PT-AL1-100W-50F-LVSG	100W	15,526	PHTYEZUY
PT-AL1-150W-50F-LVSG	150W	24,515	PE58Q9EH
PT-AL1-200W-50F-LVSG	200W	31,218	PJPQ525W
PT-AL1-240W-50F-LVSG	240W	35,569	P7RH8NAF
PT-AL1-300W-50F-LVSG	300W	45,313	P5FZ3B32



SF-W-AL1 Adjustable Slipfitter Mount



SPM-W-AL1 Adjustable Mount for Square Pole



SAM-W-AL1 Straight Arm Mount for Square Pole



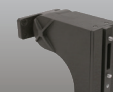
TM-W-AL1 Trunnion Mount



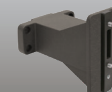
RPMA-W-AL1 Round Pole Mount Adapter



SF-AL1 Adjustable Slipfitter Mount



SPM-AL1 Adjustable Mount for Square Pole



SAM-AL1 Straight Arm Mount for Square Pole



TM-AL1 Trunnion Mount



RPMA-AL1 Round Pole Mount Adapter

\*240W in white is custom order

### Available Accessories



MSA-D Microwave Motion Sensor



PC Photocell (120V-277V)



PC-HV Photocell (480V)



SP Surge Protector



A LED Lighting Manufacturer  
 1136 S. Vail Ave., Montebello, CA 90640  
 Tel: 323-516-6458 • Email: info@portorindustry.com

Specification subject to change without notice.