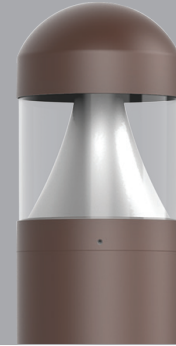


| | | | | |
|-----------------|---------------|-------|-------|-------|
| Catalog Number: | Project Name: | Note: | Date: | Type: |
|-----------------|---------------|-------|-------|-------|

Portor Lighting elevates your outdoor spaces with our Bollard Style Lighting. A perfect blend of functionality and aesthetics, our bollard lights bring safety, ambiance, and architectural charm. Experience modern illumination designed to enhance your surroundings, guiding your way with a touch of elegance.

Ideal use for walkways, entrance ways, drives and other small-area lighting applications where low mounting heights are desirable.



CONSTRUCTION

Die-cast aluminum body combined with state of the art heat dissipation. Waterproof, built rugged for outdoor harsh conditions.

ELECTRICAL

Built with the highest quality, long lasting Universal Voltage driver 120V-27V.

MOUNTING

Anchor bolt included, require assembly.

ENERGY SAVINGS

Over 70% energy savings than traditional fixtures, low heat productions requires less maintenance and operation cost.

LISTING

UL Listed, IP65 rated, DLC Listed

WARRANTY

5 year Limited Warranty

| WATTAGE | DELIVERED LUMENS | EFFICACY |
|---------|------------------|----------|
| 14W | 1960 | 140 lm/W |
| 19W | 2300 | 140 lm/W |
| 24W | 3360 | 140 lm/W |

Based on 3000K setting. Actual lumens may vary.

TECHNICAL SPECIFICATION

| | |
|---------------------|-------------------------------------|
| CCT | 3000K/4000K/5000K |
| CRI | 70+ |
| DIMMABLE | 0-10V dimmable |
| VOLTAGE | 120V-277V |
| SENSOR | Photocell and motion sensor capable |
| POWER FACTOR | >0.9 |
| SURGE PROTECTOR | 4KV |
| WORKING TEMPERATURE | -40°F ~ 113°F |
| IP RATING | IP65 Wet Location |
| WARRANTY | 5 year limited |



ORDERING SAMPLE: PT-ABL-R-DTP-C-3CP

| Complete Series | Shape | Top | Style | CCT/Wattage | Lumen | Lumen/Watt | Finish |
|---------------------------------|-----------|----------------|----------|---------------------------------------|-------------------|------------|--------|
| PT-ABL Architectural Bollard | R (Round) | DTP (Dome Top) | C (Cone) | 3CP (30K/40K/50K) (14W/19W/24W) | 1960/2300/3360 Lm | 140Lm/W | Bronze |

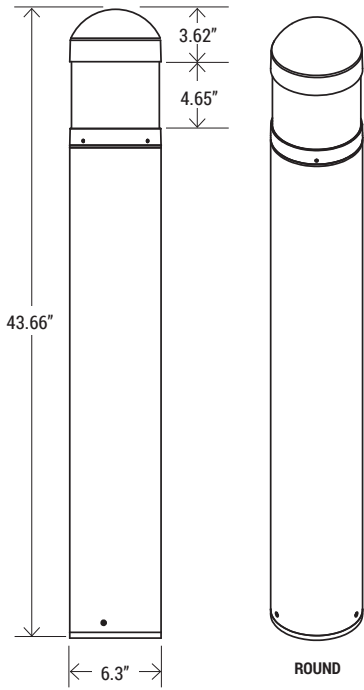
| | | | | |
|-----------------|---------------|-------|-------|-------|
| Catalog Number: | Project Name: | Note: | Date: | Type: |
|-----------------|---------------|-------|-------|-------|

DIMENSION

QTY/CARTON

4

PIECES



Anchor Bolt
Require assembly
(Included)

EM BATTERY OPTION



EM
EM Battery Back-up
(Actual image may vary)



DLC LISTING

| CATALOG NUMBER | WATTAGE | DELIVERED LUMENS | EFFICACY | DLC PRODUCT ID | CLASSIFICATION |
|--------------------|---------|------------------|----------|----------------|----------------|
| PT-ABL-R-DTP-L-3CP | 14W | 1960 | 140 lm/W | S-R0KAHW | PREMIUM |
| | 19W | 2300 | | | |
| | 24W | 3360 | | | |

Based on 3000K setting. Actual lumens may vary.