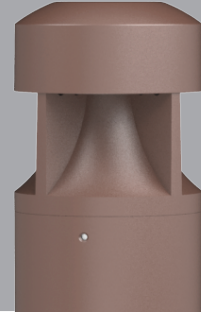


Catalog Number:	Project Name:	Note:	Date:	Type:
-----------------	---------------	-------	-------	-------

Portor Lighting elevates your outdoor spaces with our Bollard Style Lighting. A perfect blend of functionality and aesthetics, our bollard lights bring safety, ambiance, and architectural charm. Experience modern illumination designed to enhance your surroundings, guiding your way with a touch of elegance.

Ideal use for walkways, entrance ways, drives and other small-area lighting applications where low mounting heights are desirable.



CONSTRUCTION

Die-cast aluminum body combined with state of the art heat dissipation. Waterproof, built rugged for outdoor harsh conditions.

ELECTRICAL

Built with the highest quality, long lasting Universal Voltage driver 120V-27V.

MOUNTING

Anchor bolt included, require assembly.

ENERGY SAVINGS

Over 70% energy savings than traditional fixtures, low heat productions requires less maintenance and operation cost.

LISTING

UL Listed, IP65 rated, DLC Listed

WARRANTY

5 year Limited Warranty

WATTAGE	DELIVERED LUMENS	EFFICACY
14W	1960	140 lm/W
19W	2300	140 lm/W
24W	3360	140 lm/W

Based on 3000K setting. Actual lumens may vary.

TECHNICAL SPECIFICATION

CCT	3000K/4000K/5000K
CRI	70+
DIMMABLE	0-10V dimmable
VOLTAGE	120V-277V
POWER FACTOR	>0.9
SURGE PROTECTOR	4KV
WORKING TEMPERATURE	-40°F ~ 113°F
IP RATING	IP65 Wet Location
WARRANTY	5 year limited

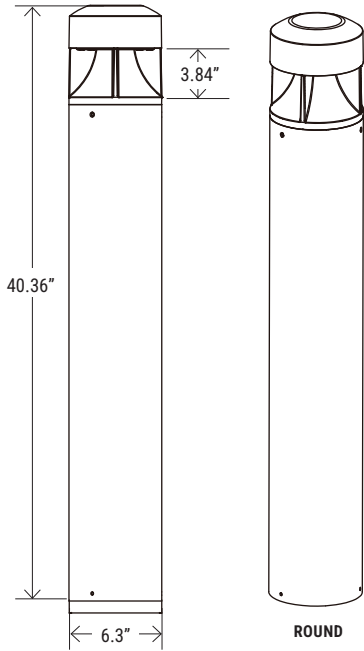


ORDERINGSAMPLE: PT-ABL-R-DTP-C-3CP

Complete Series	Shape	Top	Style	CCT/Wattage	Lumen	Lumen/Watt	Finish
PT-ABL Architectural Bollard	R (Round)	BTP (Bevel Top)	C (Column)	3CP (30K/40K/50K) (14W/19W/24W)	1960/2300/3360 Lm	140Lm/W	Bronze

Catalog Number:	Project Name:	Note:	Date:	Type:
-----------------	---------------	-------	-------	-------

DIMENSION




Anchor Bolt
Require assembly
(Included)

QTY/CARTON

4

PIECES

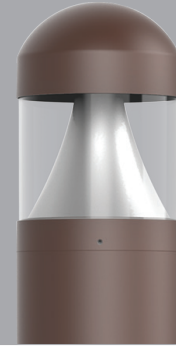
CATALOG NUMBER	WATTAGE	DELIVERED LUMENS	EFFICACY	DLC PRODUCT ID	CLASSIFICATION
PT-ABL-R-BTP-L-3CP	14W	1960	140 lm/W	S-R0KAHW	
	19W	2300			
	24W	3360			

Based on 3000K setting. Actual lumens may vary.

Catalog Number:	Project Name:	Note:	Date:	Type:
-----------------	---------------	-------	-------	-------

Portor Lighting elevates your outdoor spaces with our Bollard Style Lighting. A perfect blend of functionality and aesthetics, our bollard lights bring safety, ambiance, and architectural charm. Experience modern illumination designed to enhance your surroundings, guiding your way with a touch of elegance.

Ideal use for walkways, entrance ways, drives and other small-area lighting applications where low mounting heights are desirable.



CONSTRUCTION

Die-cast aluminum body combined with state of the art heat dissipation. Waterproof, built rugged for outdoor harsh conditions.

ELECTRICAL

Built with the highest quality, long lasting Universal Voltage driver 120V-27V.

MOUNTING

Anchor bolt included, require assembly.

ENERGY SAVINGS

Over 70% energy savings than traditional fixtures, low heat productions requires less maintenance and operation cost.

LISTING

UL Listed, IP65 rated, DLC Listed

WARRANTY

5 year Limited Warranty

WATTAGE	DELIVERED LUMENS	EFFICACY
14W	1960	140 lm/W
19W	2300	140 lm/W
24W	3360	140 lm/W

Based on 3000K setting. Actual lumens may vary.

TECHNICAL SPECIFICATION

CCT	3000K/4000K/5000K
CRI	70+
DIMMABLE	0-10V dimmable
VOLTAGE	120V-277V
POWER FACTOR	>0.9
SURGE PROTECTOR	4KV
WORKING TEMPERATURE	-40°F ~ 113°F
IP RATING	IP65 Wet Location
WARRANTY	5 year limited

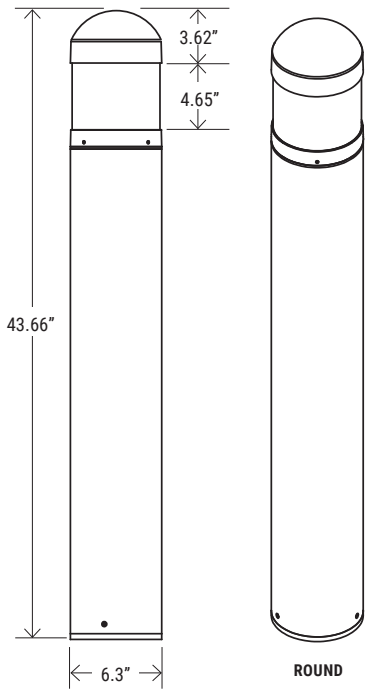


ORDERINGSAMPLE: PT-ABL-R-DTP-C-3CP

Complete Series	Shape	Top	Style	CCT/Wattage	Lumen	Lumen/Watt	Finish
PT-ABL Architectural Bollard	R (Round)	DTP (Dome Top)	C (Cone)	3CP (30K/40K/50K) (14W/19W/24W)	1960/2300/3360 Lm	140Lm/W	Bronze

Catalog Number:	Project Name:	Note:	Date:	Type:
-----------------	---------------	-------	-------	-------

DIMENSION



Anchor Bolt
Require assembly
(Included)

QTY/CARTON

4

PIECES



SHIELD OPTION



ABL-R-SHLD-180
Shield for PT-ABL-R series
bollard

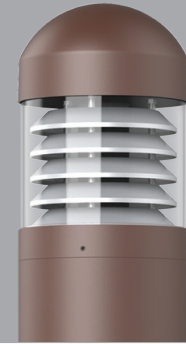
CATALOG NUMBER	WATTAGE	DELIVERED LUMENS	EFFICACY	DLC PRODUCT ID	CLASSIFICATION
PT-ABL-R-DTP-L-3CP	14W	1960	140 lm/W	S-R0KAHW	
	19W	2300			
	24W	3360			

Based on 3000K setting. Actual lumens may vary.

Catalog Number:	Project Name:	Note:	Date:	Type:
-----------------	---------------	-------	-------	-------

Portor Lighting elevates your outdoor spaces with our Bollard Style Lighting. A perfect blend of functionality and aesthetics, our bollard lights bring safety, ambiance, and architectural charm. Experience modern illumination designed to enhance your surroundings, guiding your way with a touch of elegance.

Ideal use for walkways, entrance ways, drives and other small-area lighting applications where low mounting heights are desirable.



CONSTRUCTION

Die-cast aluminum body combined with state of the art heat dissipation. Waterproof, built rugged for outdoor harsh conditions.

ELECTRICAL

Built with the highest quality, long lasting Universal Voltage driver 120V-27V.

MOUNTING

Anchor bolt included, require assembly.

ENERGY SAVINGS

Over 70% energy savings than traditional fixtures, low heat productions requires less maintenance and operation cost.

LISTING

UL Listed, IP65 rated

WARRANTY

5 year Limited Warranty

WATTAGE	DELIVERED LUMENS	EFFICACY
14W	1000	75 lm/W
19W	1420	
24W	1800	

Based on 3000K setting. Actual lumens may vary.

TECHNICAL SPECIFICATION

CCT	3000K/4000K/5000K
CRI	70+
DIMMABLE	0-10V dimmable
VOLTAGE	120V-277V
POWER FACTOR	>0.9
SURGE PROTECTOR	4KV
WORKING TEMPERATURE	-40°F ~ 113°F
IP RATING	IP65 Wet Location
WARRANTY	5 year limited



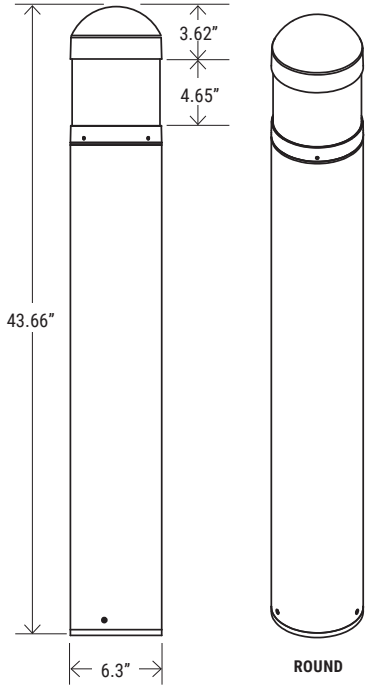
ORDERING SAMPLE: PT-ABL-R-DTP-L-3CP

Complete Series	Shape	Top	Style	CCT/Wattage	Lumen	Lumen/Watt	Finish
PT-ABL Architectural Bollard	R (Round)	DTP (Dome Top)	L (Louvre)	3CP (30K/40K/50K) (14W/19W/24W)	1000/1420/1800 Lm	75 Lm/W	Bronze

*Not DLC Listed

Catalog Number:	Project Name:	Note:	Date:	Type:
-----------------	---------------	-------	-------	-------

DIMENSION



Anchor Bolt
Require assembly
(Included)

QTY/CARTON

4

PIECES



SHIELD OPTION

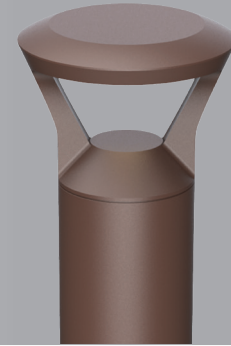


ABL-R-SHLD-180
Shield for PT-ABL-R series
bollard

Catalog Number:	Project Name:	Note:	Date:	Type:
-----------------	---------------	-------	-------	-------

Portor Lighting elevates your outdoor spaces with our Bollard Style Lighting. A perfect blend of functionality and aesthetics, our bollard lights bring safety, ambiance, and architectural charm. Experience modern illumination designed to enhance your surroundings, guiding your way with a touch of elegance.

Ideal use for walkways, entrance ways, drives and other small-area lighting applications where low mounting heights are desirable.



CONSTRUCTION

Die-cast aluminum body combined with state of the art heat dissipation. Waterproof, built rugged for outdoor harsh conditions.

ELECTRICAL

Built with the highest quality, long lasting Universal Voltage driver 120V-27V.

MOUNTING

Anchor bolt included, require assembly.

ENERGY SAVINGS

Over 70% energy savings than traditional fixtures, low heat productions requires less maintenance and operation cost.

LISTING

UL Listed, IP65 rated, DLC Listed

WARRANTY

5 year Limited Warranty

WATTAGE	DELIVERED LUMENS	EFFICACY
14W	1727	124 lm/W
19W	2300	121 lm/W
24W	2758	123 lm/W

Based on 3000K setting. Actual lumens may vary.

TECHNICAL SPECIFICATION

CCT	3000K/4000K/5000K
CRI	70+
DIMMABLE	0-10V dimmable
VOLTAGE	120V-277V
POWER FACTOR	>0.9
SURGE PROTECTOR	4KV
WORKING TEMPERATURE	-40°F ~ 113°F
IP RATING	IP65 Wet Location
WARRANTY	5 year limited

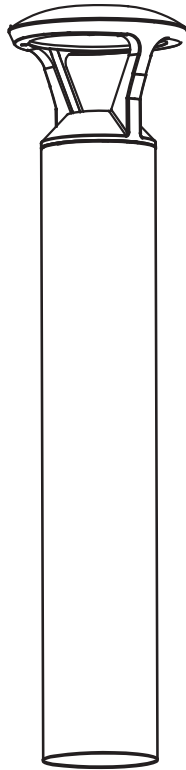
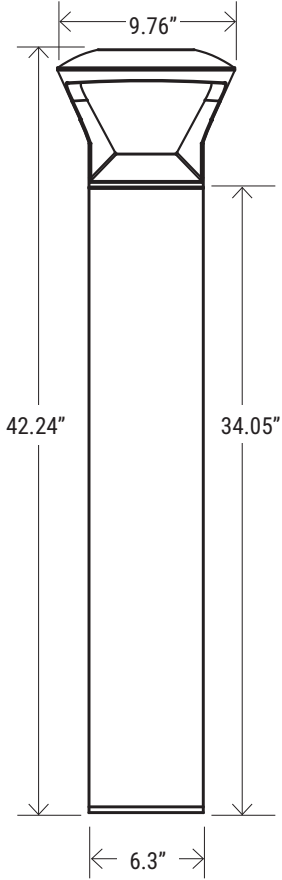


ORDERINGSAMPLE: **PT-ABL-R-PTP-O-3CP**

Complete Series	Shape	Top	Style	CCT/Wattage	Lumen	Lumen/Watt	Finish
PT-ABL Architectural Bollard	R (Round)	PTP (Post Top)	O (Open)	3CP (30K/40K/50K) (14W/19W/24W)	1727/2300/2758 Lm	123Lm/W	Bronze

Catalog Number:	Project Name:	Note:	Date:	Type:
-----------------	---------------	-------	-------	-------

DIMENSION



ROUND



Anchor Bolt
Require assembly
(Included)

QTY/CARTON

4

PIECES

CATALOG NUMBER	WATTAGE	DELIVERED LUMENS	EFFICACY	DLC PRODUCT ID	CLASSIFICATION
PT-ABL-R-PTP-0-3CP	14W	1727	124 lm/W	S-8LAEUO	
	19W	2300	121 lm/W		
	24W	2758	123 lm/W		