

Catalog Number:	Project Name:	Note:	Date:	Type:
-----------------	---------------	-------	-------	-------

Portor's second generation AL2N Area Light White Series is highly energy efficient and provides advanced optical control. The ultra slim profile delivers enhanced performance for general area lighting applications. The robust die-cast housing provides excellent thermal management for longer life and can withstand everyday harsh outdoor environments.

Ideal use for parking lots, car dealerships, roadways, walkways, school campuses, shopping centers and industrial areas

NOT FOR USE AS AN UP LIGHT



CONSTRUCTION

Die-cast aluminum body combined with state of the art heat dissipation. Waterproof, built rugged for outdoor harsh conditions.

ELECTRICAL

Built with the highest quality, long lasting Universal Voltage driver 100V-27V (347V-480V optional), and water resistant LED chips.

OPTICAL SYSTEM

Comes standard with Type III optics designed to reduce glare and improve light distribution through precision formed lens optics. Type V is available.

MOUNTING

Multiple mounting options available: Slipfitter, square-pole mount, round-pole mount, u-bracket and trunnion mount.

SENSOR READY

Photocell and motion sensor available.

DIMMING

1-10V dimmable

ENERGY SAVINGS

Over 70% energy savings than traditional fixtures, low heat productions requires less maintenance and operation cost.

LISTING

UL Listed, RoHS, IP65 rated

WARRANTY

5 year Limited Warranty, Rated for 50,000 hours.

WATTAGE	DELIVERED LUMENS	EFFICACY
200W	29,757	148 lm/W
240W	35,511	147 lm/W
300W	45,353	148 lm/W

Based on 5000K, 70 CRI. Actual lumens may vary.

TECHNICAL SPECIFICATION

CCT	3000K/4000K/5000K
CRI	70+
DIMMABLE	1-10V dimming
DISTRIBUTION	Type III (Standard), Type IV & V (Optional)
VOLTAGE	100V-277V (347V-480V optional)
SENSOR	Photocell and motion sensor capable
POWER FREQUENCY	50/60 Hz
POWER FACTOR	>0.9
THD	≤15%
WORKING TEMPERATURE	-40°F ~ 122°F
IP RATING	IP65 Wet Location
WARRANTY	5 year limited



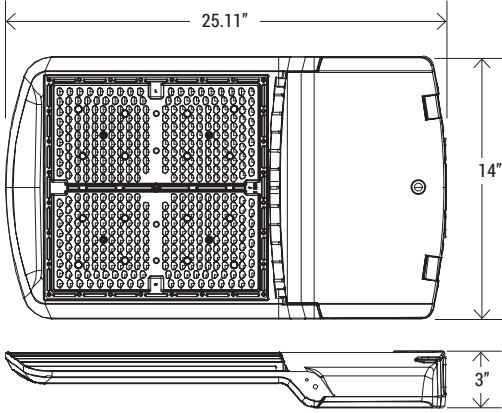
ORDERING SAMPLE: PT-AL2N-300-3CP

Series	CCT/Wattage	Finish	Distribution	*Mounting (Not included)		*Accessories/Options		
				Bronze	White	Photocell	Sensor	Shield
PT-AL2N-300-3CP Second Generation Area Light Series	(30K/40K/50K) (200W/240W/300W) Selector	Blank (Bronze) W (White)	Blank (Type III) T4 (Type IV) T5 (Type V)	SF-AL2	SF-AL2-W	PC PC-HV	MS-UNI-MW RC-UNI-MW (Required)	SHD-AL2-2037 SHD-AL2-2037-W
				SPM-AL2	SPM-AL2-W			
				SAM-AL2	SAM-AL2-W			
				TM-AL2	TM-AL2-W			
				UB-AL2-2037	UB-AL2-2037-W			

**Sold separate*

Catalog Number:	Project Name:	Note:	Date:	Type:
-----------------	---------------	-------	-------	-------

DIMENSION



PHOTOCELL OPTION



PC
Photocell
(120V-277V)



PC-HV
Photocell (480V)

SENSOR OPTION



MS-UNI-MW
Universal Microwave Motion Sensor



RC-UNI-MW
Remote Control (Required)

SHIELD OPTION



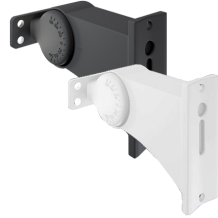
SHD-AL2-2037
SHD-AL2-2037-W
(200W/240W/300W)

Shield for AL Series

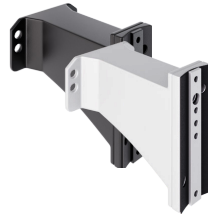
***MOUNTING OPTION (SOLD SEPARATELY)**



SF-AL2 (-W)
Slipfitter



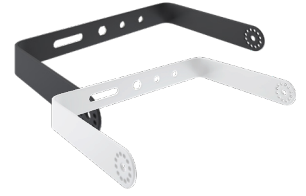
SPM-AL2 (-W)
Adjustable Mount For
Square/Round Pole



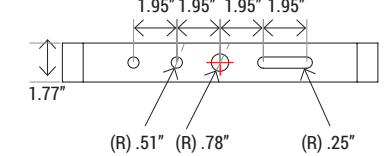
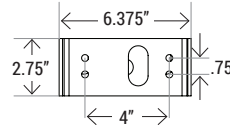
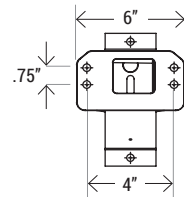
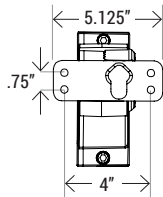
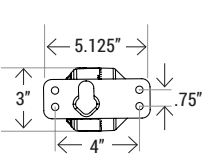
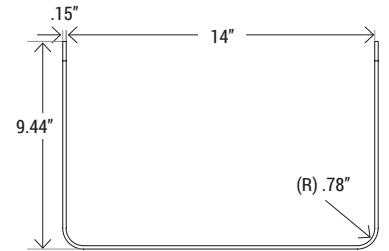
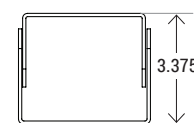
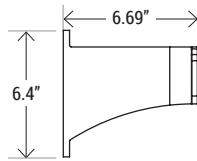
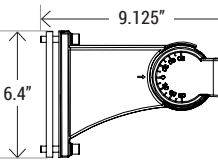
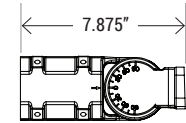
SAM-AL2 (-W)
Straight Arm Mount for
Square Pole



TM-AL2 (-W)
Trunnion Mount

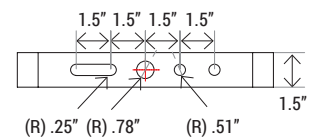
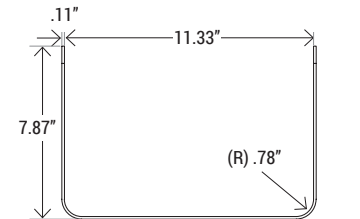


UB-AL2-2037 (-W)
U-Bracket Mount

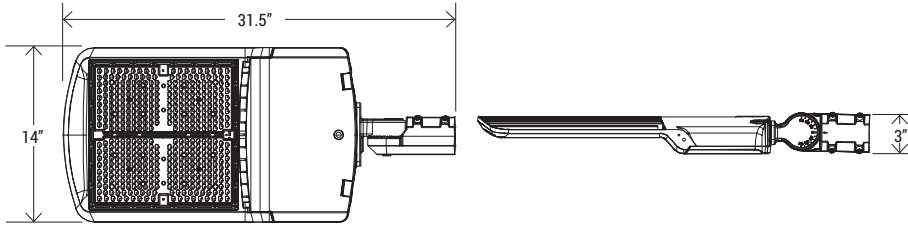


ELECTRICAL LOAD

WATTAGE	120V	208V	240V	277V	347V	480V
200W	1.68 Amp	0.96 Amp	0.83 Amp	0.72 Amp	0.57 Amp	0.42 Amp
240W	2.0 Amp	1.15 Amp	1.00 Amp	0.87 Amp	0.69 Amp	0.50 Amp
300W	2.5 Amp	1.44 Amp	1.25 Amp	1.08 Amp	0.86 Amp	0.62 Amp



Catalog Number:	Project Name:	Note:	Date:	Type:
-----------------	---------------	-------	-------	-------



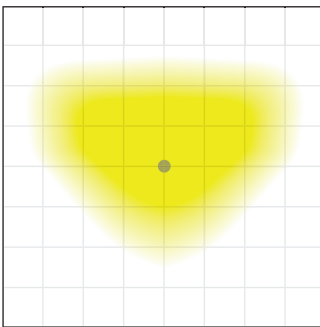
EPA	0.8 ft²
Net Weight	17.42 lbs
Gross Weight	20.72 lbs
Dimension	14" x 31.5" x 3"

B	U	G
4	0	4

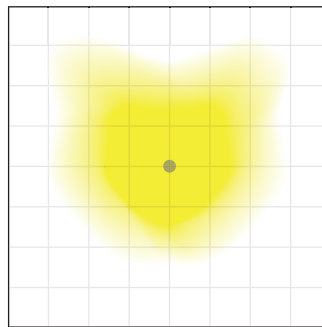
*WITH SLIPFITTER MOUNTING

CONFIGURATION	1	2 @ 180°	2 @ 90°	3 @ 90°	3 @ 120°	4 @ 90°
EPA	0.8 ft²	1.6 ft²	1.2 ft²	2.0 ft²	1.7 ft²	2.3 ft²
Net Weight	17.42 lbs	34.84 lbs	34.84 lbs	52.26 lbs	52.26 lbs	69.68 lbs

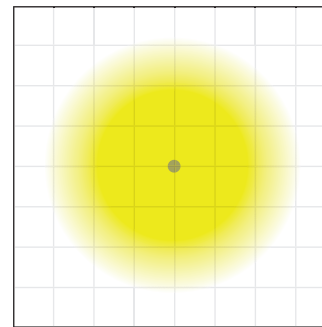
DISTRIBUTION



TYPE III
Type III distribution provides a wide, round pattern and yields an even light disbursement since the light projects outwards.



TYPE IV
Type IV has a preferred lateral width of 60° make it ideal for parking area and courtyard.



TYPE V
Type V provides central circular or square design pattern, equally across all angles from a central point.

QTY/CARTON



PIECE