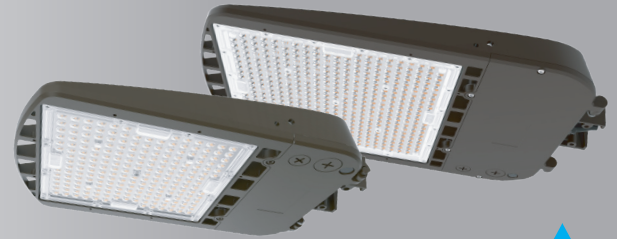


Catalog Number:	Project Name:	Note:	Date:	Type:
-----------------	---------------	-------	-------	-------

Portor's ALE Area Light Series features outstanding light output performance, uniform illumination, and high efficacy. The one piece die-cast robust aluminum housing provides excellent thermal management for longer life and can withstand everyday harsh outdoor environments.

Ideal use for parking lots, car dealerships, roadways, walkways, school campuses, shopping centers and industrial areas



NOT FOR USE AS AN UP LIGHT

CONSTRUCTION

Die-cast aluminum body combined with state of the art heat dissipation. Waterproof, built rugged for outdoor harsh conditions.

ELECTRICAL

Built with the highest quality, long lasting Universal Voltage driver 100V-277V (347V-480V optional), and water resistant LED chips.

OPTICAL SYSTEM

Comes standard with Type III optics designed to reduce glare and improve light distribution through precision formed lens optics. Type IV and Type V is available.

MOUNTING

Multiple mounting options available: Slipfitter, square-pole mount, u-bracket, straight arm mount and trunnion mount.

SENSOR READY

Photocell and motion sensor available.

DIMMING

0-10V dimmable

ENERGY SAVINGS

Over 70% energy savings than traditional fixtures, low heat productions requires less maintenance and operation cost.

LISTING

UL Listed, RoHS, IP65 rated

WARRANTY

5 year Limited Warranty

WATTAGE	DELIVERED LUMENS	EFFICACY
PT-ALE-150-3CP	70W / 12,249	179 lm/W
	100W / 15,356	172 lm/W
	150W / 22,107	159 lm/W
PT-ALE-300-3CP	200W / 33,850	173 lm/W
	240W / 38,496	167 lm/W
	300W / 45,524	163 lm/W

Based on IES results @ 4000K, 80 CRI. Actual lumens may vary.

TECHNICAL SPECIFICATION

CRI	80
DIMMABLE	0-10V dimming
DISTRIBUTION	Type III (Standard), Type IV & V (Optional)
VOLTAGE	100V-277V (347V-480V optional)
POWER FREQUENCY	50/60 Hz
SENSOR	Photocell and motion sensor capable
POWER FACTOR	>0.9
THD	≤15%
WORKING TEMPERATURE	-40°F ~ 113°F
IP RATING	IP65 Wet Location
WARRANTY	5 year limited



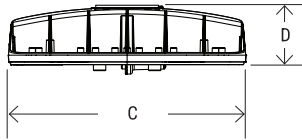
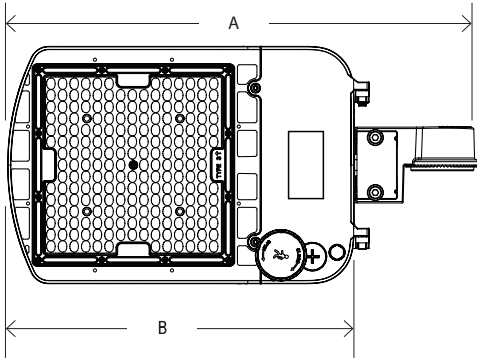
ORDERING SAMPLE: PT-ALE-150-3CP

**Sold separate*

Series	Series	3CP	Finish	Distribution	*Mounting (Not included)	*Accessories/Options		
PT-ALE Economy Area Light Series	150	3CP (30K40K/50K) (70W/100W/150W)	Blank (Bronze)	Blank (Type III) T4 (Type IV) T5 (Type V) <i>special order required</i>	Bronze SF-AL2 SPM-AL2 TM-ALE UB-AL2-1015	Photocel PC	Sensor PT-UNI2-SP-MW	T4-ALE-150 T5-ALE-150
	300	3CP (30K40K/50K) (200W/240W/300W)						T4-ALE-300 T5-ALE-300

Catalog Number:	Project Name:	Note:	Date:	Type:
-----------------	---------------	-------	-------	-------

DIMENSION



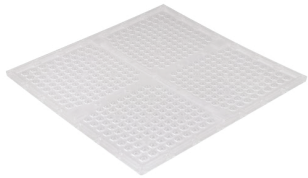
Model No.	A	B	C	D
PT-ALE-150	19.5"	14.37"	9.8"	2.37"
PT-ALE-300	24.4"	19.29"	13.3"	2.37"

QTY/CARTON

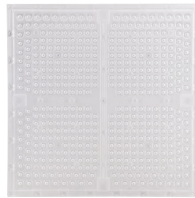


PIECE

***LENS OPTIONS (SOLD SEPARATELY)**

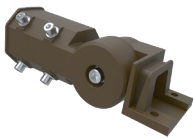


T4-ALE-150
T4-ALE-300

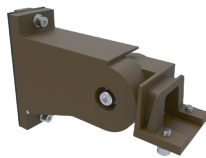


T5-ALE-150
T5-ALE-300

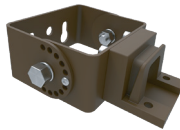
***MOUNTING OPTION (SOLD SEPARATELY)**



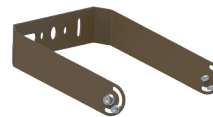
SF-AL2
Slipfitter



SPM-AL2
Adjustable Mount For
Square/Round Pole



TM-ALE
Trunnion Mount



UB-ALE-150
UB-ALE-300
U-Bracket Mount

ACCESSORIES (SOLD SEPARATELY)



PC
Photocell
(120V-277V)



PT-UNI2-SP-MW
Universal Short Pin Microwave Motion Sensor



PT-MSH-RC2
Intelligent Remote Control Unit