

Catalog Number:	Project Name:	Note:	Date:	Type:
-----------------	---------------	-------	-------	-------

Portor's 8th Generation BLP series produce industry-leading performance with deep energy savings and continuous dimming. The compact, slick profile produces uniform and glare free lumen output.

Perfect application for retail stores, schools, offices, markets and restaurant.



**CONSTRUCTION**

Cold-rolled steel and extruded aluminum frame, prefabricated paint with matte white finished. Slim profile design. Integrated T-Bar mounting clips built in onto the fixture. Easy installation

**ELECTRICAL**

Luminaire is built with the highest quality driver that is Universal Voltage (120V-27V), uses long lasting, highly-efficient LED packages.

**DRIVER**

Driver is fixed on the back of the panel or side to prevent mis-handling during shipment.

**OPTICAL SYSTEM**

Back-lit optics produces uniform light output, diffuser lens reduces glare and improve overall energy efficiency.

**DIMMING**

Continuous dimming (0-10V) comes standard.

**ENERGY SAVINGS**

Over 50% energy savings than traditionally fluorescent fixtures, low heat productions requires less maintenance and operation cost.

**LISTING**

UL Listed, DLC Listed

**WARRANTY**

5 Years Limited Warranty, Rated for 50,000 hours

WATTAGE	DELIVERED LUMENS	EFFICACY
25W	2,984	118 lm/W
30W	3,521	
40W	4,439	

*Based on 3500K, 80 CRI. Actual lumens may vary.*

**TECHNICAL SPECIFICATION**

CCT	3500K/4000K/5000K
CRI	80+
DIMMABLE	0-10V dimmable
VOLTAGE	120V-277V
POWER FREQUENCY	50/60 Hz
POWER FACTOR	>0.9
THD	≤20%
DRIVER EFFICIENCY	>85%
RATING	IP40, Suitable for damp locations
WARRANTY	5 year limited

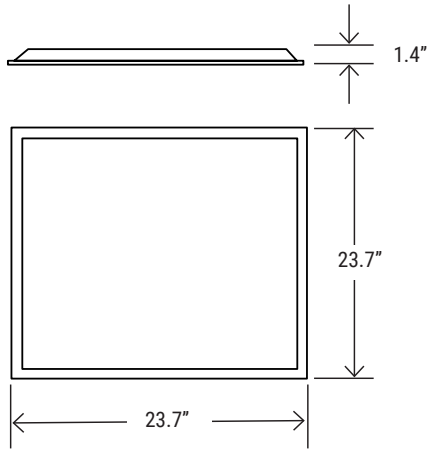


ORDERING SAMPLE:  -  -  -  -

Series - Size - CCT/Wattage	Accessories/Options (Sold separately)				
	EM Battery	Surface/Flange Kit	Pendant Cable	Other	Control
<b>PT-BLP-22-3CP-SR</b> (CCT: 3500K/4000K/5000K) (Wattage: 25W/30W/40W)	___ Blank PT-EMG-8W PT-EMG-15W	___ Blank SMK-BLP-22 FK-22	___ Blank A-CBL-BLP-224	___ Blank JP-BPL MC-5W-SC-6F MC-6W-SC-6F MC-5W-SN-HD3-6F MC-6W-SN-HD3-6F	<b>Lutron AWN</b>

Catalog Number:	Project Name:	Note:	Date:	Type:
-----------------	---------------	-------	-------	-------

**DIMENSION**



**QTY/CARTON**

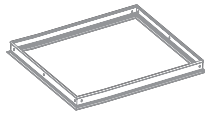


Maintenance-free optical module sealed for life; no internal cleaning required.

**SURFACE MOUNT/FLANGE KIT**



**SMK-BLP-22**  
Surface mount kit for the 2x2 panel



**FK-22**  
Flange kit for the 2x2 panel



**AWN**  
Athena Wireless Node



**EM BATTERY OPTION**



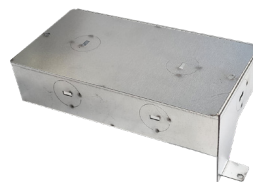
**PT-EMG-8W / PT-EMG-15W**  
Low Voltage EM Battery

**PENDANT CABLE**



**A-CB-BLP-224**  
5' Aircraft Cable

**JUNCTION BOX**



**JB-BPL**  
Junction box  
(Field installation)

**OTHER**



**MC-5W-SC-6F / MC-6W-SC-6F** (Screw-in)  
**MC-5W-SN-6HD3F / MC-6W-SN-6HD3F** (Snap-in)  
MC series metal flex whip