

Project Name:	Notes:	Date:	Type:
---------------	--------	-------	-------

Portor's 3in1 surface mounted downlights are an ideal solution when recessed fixtures are not an option. Available in multiple apertures, the DL31-BL Series features color tunable technology that lets the user choose between 2700K, 3000K, 3500K, 4000K, or 5000K.

Ideal for drop ceilings, hallways, bathrooms, kitchens, basements, entry ways, porches (covered ceiling only), corridors, nursing/retirement homes, condos, apartments, and any other small areas with limited space.



## Direct Mounting

**NO RECESSED HOUSING NEEDED**

• For Retrofit or New Construction Installation •

### FEATURES

- New Construction or Retrofit Installation
- Back-lit technology, with no glare or dark spots
- Easy installation
- Smooth light output
- LED technology fits anywhere you need general light source
- IC rated for direct contact with insulation
- Perfect solution where joists or duct work would normally prevent recessed installation

### DIMMING

Triac dimmable down to 100%-10%.

Compatible with most major brands of dimmers.

### LISTING

ETL Listed, FCC, RoHS, CE & Energy Star Listed

WATTAGE	DELIVERED LUMENS	EFFICACY
12W	875 LM @ 2700K	up to 79 lm/W
	900 LM @ 3000K	
	950 LM @ 3500K	
	951 LM @ 4000K	
10W	910 LM @ 5000K	up to 68 lm/W
	615 LM @ 2700K	
	654 LM @ 3000K	
	683 LM @ 3500K	
	680 LM @ 4000K	
	628 LM @ 5000K	

Based on IES results. Actual lumens may vary.

### TECHNICAL SPECIFICATION

WATTAGE	10W, 12W
VOLTAGE	120V, 60 Hz
CRI	90
CCT	2700K   3000K   3500K   4000K   5000K
BEAM ANGLE	120°
IP RATING	Suitable for damp locations
DIMMABLE	Triac dimming
POWER FACTOR	>0.9
WARRANTY	5 year limited

### MODEL NUMBER(S)

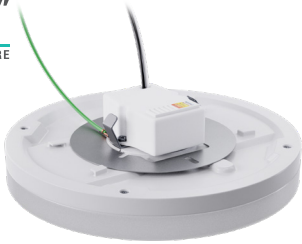
MODEL#	WATTS	LUMENS	LM/WATT	CCT	CRI	VOLTAGE
<b>PT-DL31-BL-6I-12W-5CCT</b>	12W	up to 951	79	2700K/3000K/3500K/ 4000K/5000K	90	120V
<b>PT-DL31-BL-4I-10W-5CCT</b>	10W	up to 683	68			



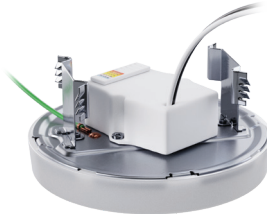
Project Name:	Notes:	Date:	Type:
---------------	--------	-------	-------

**3IN1 MOUNTING OPTIONS**

**6"**  
APERTURE



**4"**  
APERTURE

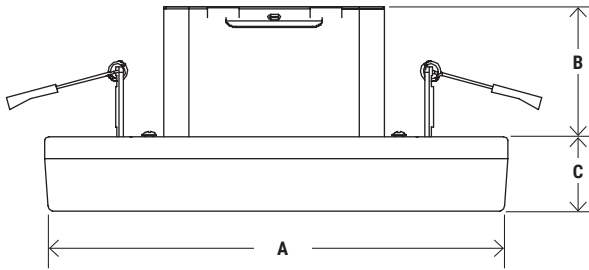


Junction box installation

Recessed Housing installation

Can-Less installation

**DIMENSION**



DIMENSION	PT-DL31-BL-6I	PT-DL31-BL-4I
<b>A</b>	<b>7.2"</b>	<b>5"</b>
<b>B</b>	<b>2"</b>	<b>2"</b>
<b>C</b>	<b>1.25"</b>	<b>1.5"</b>

**COMPATIBLE DIMMERS**

LUTRON*	LEVITON*	LEGRAND
<ul style="list-style-type: none"> <li>• MAESTRO MACL-153MA-WA</li> <li>• DIVA SCL-15 3PA-IV</li> <li>• CASETA PD-5NE</li> <li>• MAESTRO 5-600PA-WH</li> <li>• SKYLARK TGCAL-153PA-WA</li> <li>• TOGGLER DVC L-153P</li> <li>• DIVA DVCL V-300P-WHH</li> </ul>	<ul style="list-style-type: none"> <li>• RDL06-TW</li> </ul>	<ul style="list-style-type: none"> <li>• RADIANT RHCL453PTCCCV6</li> <li>• ADPD453LG 2</li> </ul>

\*For more details, please visit company's website

Project Name:	Notes:	Date:	Type:
---------------	--------	-------	-------

Portor's 3in1 surface mounted downlights are an ideal solution when recessed fixtures are not an option. Available in multiple apertures, the DL31-BL Series features color tunable technology that lets the user choose between 2700K, 3000K, 3500K, 4000K, or 5000K.

Ideal for drop ceilings, hallways, bathrooms, kitchens, basements, entry ways, porches (covered ceiling only), corridors, nursing/retirement homes, condos, apartments, and any other small areas with limited space.



## Direct Mounting

**NO RECESSED HOUSING NEEDED**

• For Retrofit or New Construction Installation •

### FEATURES

- New Construction or Retrofit Installation
- Back-lit technology, with no glare or dark spots
- Easy installation
- Smooth light output
- LED technology fits anywhere you need general light source
- IC rated for direct contact with insulation
- Perfect solution where joists or duct work would normally prevent recessed installation

### DIMMING

Triac dimmable down to 100%-10%.

Compatible with most major brands of dimmers.

### LISTING

ETL Listed, FCC, RoHS, CE & Energy Star Listed

WATTAGE	DELIVERED LUMENS	EFFICACY
12W	875 LM @ 2700K	up to 79 lm/W
	900 LM @ 3000K	
	950 LM @ 3500K	
	951 LM @ 4000K	
10W	910 LM @ 5000K	up to 68 lm/W
	615 LM @ 2700K	
	654 LM @ 3000K	
	683 LM @ 3500K	
	680 LM @ 4000K	
	628 LM @ 5000K	

Based on IES results. Actual lumens may vary.

### TECHNICAL SPECIFICATION

WATTAGE	10W, 12W
VOLTAGE	120V, 60 Hz
CRI	90
CCT	2700K   3000K   3500K   4000K   5000K
BEAM ANGLE	120°
IP RATING	Suitable for damp locations
DIMMABLE	Triac dimming
POWER FACTOR	>0.9
WARRANTY	5 year limited

### MODEL NUMBER(S)

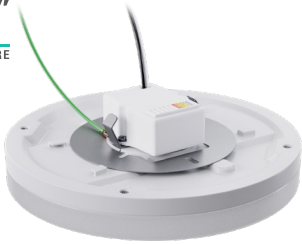
MODEL#	WATTS	LUMENS	LM/WATT	CCT	CRI	VOLTAGE
<b>PT-DL31-BL-6I-12W-5CCT</b>	12W	up to 951	79	2700K/3000K/3500K/ 4000K/5000K	90	120V
<b>PT-DL31-BL-4I-10W-5CCT</b>	10W	up to 683	68			



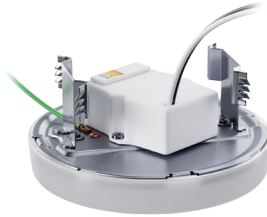
Project Name:	Notes:	Date:	Type:
---------------	--------	-------	-------

**3IN1 MOUNTING OPTIONS**

**6"**  
APERTURE



**4"**  
APERTURE

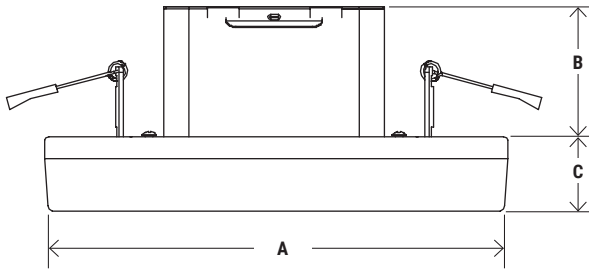


Junction box installation

Recessed Housing installation

Can-Less installation

**DIMENSION**



DIMENSION	PT-DL31-BL-6I	PT-DL31-BL-4I
<b>A</b>	<b>7.2"</b>	<b>5"</b>
<b>B</b>	<b>2"</b>	<b>2"</b>
<b>C</b>	<b>1.25"</b>	<b>1.5"</b>

**COMPATIBLE DIMMERS**

LUTRON*	LEVITON*	LEGRAND
<ul style="list-style-type: none"> <li>• MAESTRO MACL-153MA-WA</li> <li>• DIVA SCL-15 3PA-IV</li> <li>• CASETA PD-5NE</li> <li>• MAESTRO 5-600PA-WH</li> <li>• SKYLARK TGCAL-153PA-WA</li> <li>• TOGGLER DVC L-153P</li> <li>• DIVA DVCL V-300P-WHH</li> </ul>	<ul style="list-style-type: none"> <li>• RDL06-TW</li> </ul>	<ul style="list-style-type: none"> <li>• RADIANT RHCL453PTCCCV6</li> <li>• ADPD453LG 2</li> </ul>

\*For more details, please visit company's website