

Catalog Number:	Project Name:	Note:	Date:	Type:
-----------------	---------------	-------	-------	-------

The LS-SR series is a slim, light weight and energy efficient luminaire that is equipped with 0-10V dimming capability and a field-adjustable CCT, wattage selector and with Portor's **Sensor Ready** combined with TEELIO's PT-MS-BT sensor, offers seamless integration for a fully smart bluetooth lighting system.

The fixture includes standard surface mounting kit excellent for utility applications such as parking garage, warehouse, hallway, storage facility, restrooms and stairwell.



**CONSTRUCTION**

The luminaire features matte white finish and galvanized housing. T-bar mounting hole make it easy for installation, and multiple knock-outs provide options for occupancy sensor.

**OPTICAL SYSTEM**

Luminaire is built with the highest quality driver that is Universal Voltage (120V-277V), Long life, high efficacy, micro power LEDs

**LENS**

Frosted lens diffuser reduces glare and improves overall light output.

**SENSOR READY**

Motion sensor and daylight harvesting sensor available, for factory installation.

**CONTROLS**

Sensor ready fixture (consult factory) to maximize energy savings

**ENERGY SAVINGS**

Over 50% energy savings than traditionally fluorescent fixtures, low heat productions requires less maintenance and operation cost.

**LISTING**

UL Listed

**WARRANTY**

5 year Limited Warranty

	WATTAGE	DELIVERED LUMENS	EFFICACY
<b>2'</b>	15W/20W/25W	1950 @ 3500K	130 lm/W
<b>4'</b>	34W/38W/45W	4420 @ 3500K	130 lm/W
<b>8'</b>	65W/75W/90W	8450 @ 3500K	130 lm/W

*Based on the highest wattage @ 3500K default setting, 80 CRI. Actual lumens may vary.*

**TECHNICAL SPECIFICATION**

CCT	3500K/4000K/5000K
CRI	80+
DIMMABLE	0-10V dimming
VOLTAGE	120V-277V
POWER FREQUENCY	50/60 Hz
POWER FACTOR	>0.9
THD	≤10%
WORKING TEMPERATURE	-4°F ~ 122°F
LIFETIME	L70 > 100,000 hours
IP RATING	IP44, Suitable for damp locations
WARRANTY	5 year limited



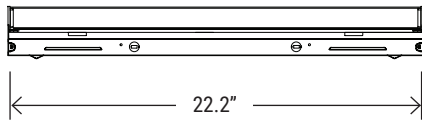
ORDERING SAMPLE:  -  -  -

Series	Size	CCT/Wattage	Capability
PT-LS LED Linear Strip Luminaire	2F (2-footer)	3CP (3500K/4000K/5000K) (25W/30W/40W)	SR (Sensor Ready)
	4F (4-footer)	3CP (3500K/4000K/5000K) (55W/60W/65W)	SR (Sensor Ready)
	8F (8-footer)	3CP (3500K/4000K/5000K) (55W/60W/65W)	SR (Sensor Ready)

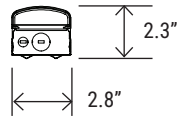
Accessories/Options		
EM Battery	Sensor	Mounting
___ Blank PT-EMN-08W-050	___ Blank PT-MSH-PR PT-UNI2-SP-PR ELB-UNI (Required) MS-RC2 (Required)	___ Blank (Standard surface mount) A-CBL WG-LS1-4F CON-LS1
PT-EMN-15W-050		

Catalog Number:	Project Name:	Note:	Date:	Type:
-----------------	---------------	-------	-------	-------

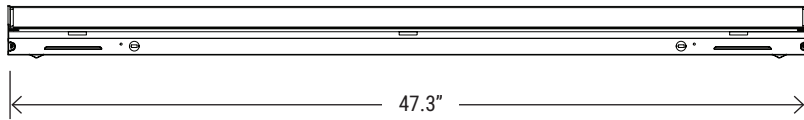
**DIMENSION**



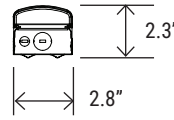
**2'** PT-LS-SR Series



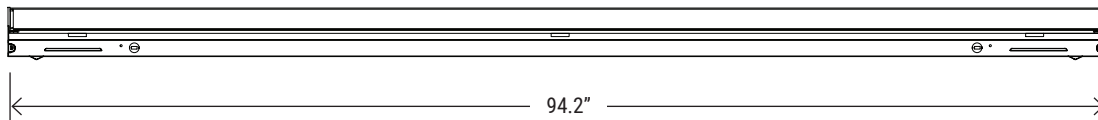
QTY/BOX  
**6**



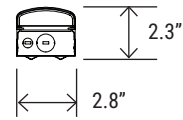
**4'** PT-LS-SR Series



QTY/BOX  
**6**



**8'** PT-LS-SR Series



QTY/BOX  
**6**

**MOUNTING OPTION**



**SM**  
Surface mount (Standard)  
Comes with junction cover

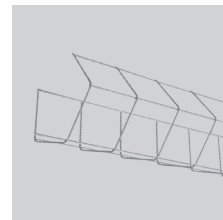


**A-CBL**  
Hanging wire for  
strip light



**CON-LS1**  
Connector

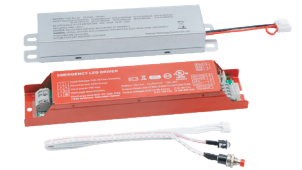
**WIRE GUARD OPTION**



**WG-LS1-4F**  
Wire guard for 4-ft LS1

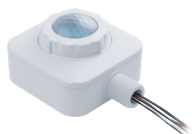
*(For 8-ft fixtures,  
two WG-LS1-4F are needed)*

**EM BATTERY OPTION**



**PT-EMN-08W-050 (4FT)**  
**PT-EMN-15W-050 (8FT)**  
LED Emergency Driver

**SENSOR OPTION**



**PT-MSH-PR**  
Motion Sensor



**PT-UNI2-SP-PR**  
Dimmable PIR  
Motion Sensor

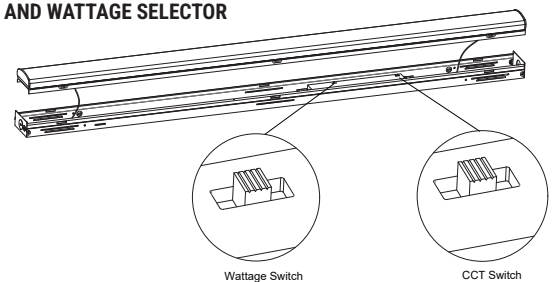


**ELB-UNI**  
Elbow for  
UNI2-SP-PR  
(Required)



**MSH-RC2**  
Intelligent Control  
Unit (Required)

**CCT AND WATTAGE SELECTOR**



- DIP switches are located onto the drive box.
- Select a wattage and color temperature by sliding switch left or right respectively to the desired value.