

Catalog Number:	Project Name:	Note:	Date:	Type:
-----------------	---------------	-------	-------	-------



## DESCRIPTION

The PT-MS-4P-PR is passive infrared occupancy bi-level sensor, as a fixture sensor mounts in indoor light fixture and provides multi-level control based on motion and/or daylight contribution.

## FEATURES

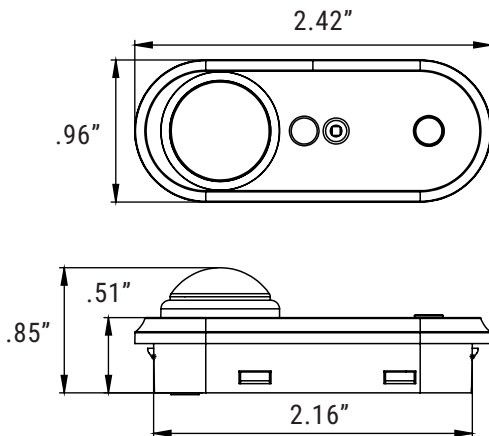
- Daylight Harvesting + PIR analog sensing technology

## TECHNICAL SPECIFICATION

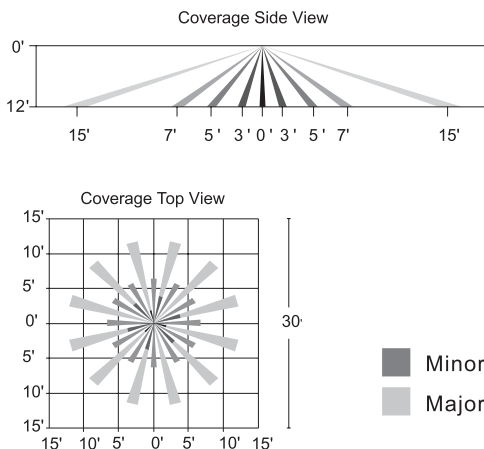
Input Voltage	DC 12V
Input Current	25mA Max
Input Power	0.3W
Output Current	10mA Max
Output Power	0.1W
Dimming	0-10V
Sinking Current	25mA Max
Bluetooth Transmit	100ft Max
Housing Material	UL 94-5VA
Detection Angle	360°
Mounting Height	12ft Max
Indoor/Outdoor Use	Indoor Use Only
Operating Temperature	-22°F to 131°F
Storage Temperature	-22°F to 185°F
IP Rating	IP20
Color	White
Warranty	5 year warranty



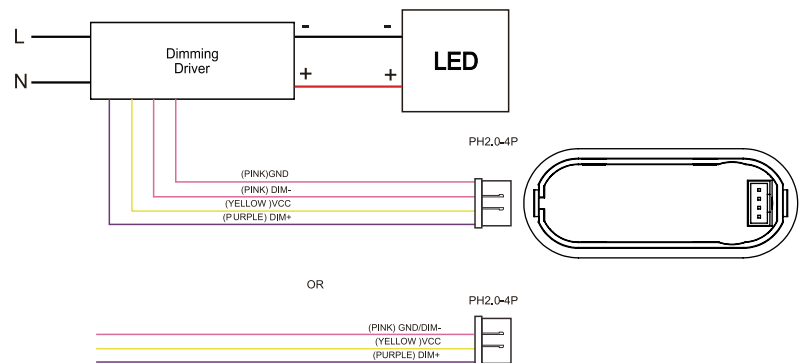
## DIMENSION



## COVERAGE PATTERNS



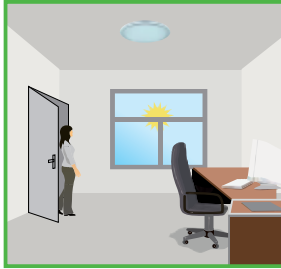
## Wiring



Catalog Number:	Project Name:	Note:	Date:	Type:
-----------------	---------------	-------	-------	-------

## **DIMMING FUNCTION**

This function inside the motion sensor to achieve tri-level control, for some areas which require a light change notice before switch-off. The sensor offers 3 levels of light: 100%--->dimmed light (natural light is insufficient) -->off; and 2 periods of selectable waiting time: motion hold-time and stand-by period; Selectable daylight threshold and freedom of detection area.



With sufficient natural light, the light does not switch on when presence is detected.



With insufficient natural light, the sensor switches on the light automatically when presence is detected.




After hold-time, the light dims to stand-by level if the surrounding natural light is below the daylight threshold.



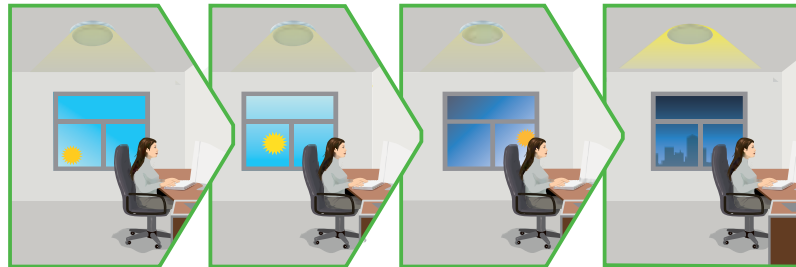
Light switches off automatically after the stand-by period elapses.

## **DAYLIGHT HARVESTING FUNCTION ( ONLY BY USING REMOTE CONTROL )**

Open the daylight harvesting function only by choosing “” button when remote control is in setting condition. Memory and maintain current ambient brightness.



When the natural light is sufficient or dark, movement is detected and the light will turn on 100% brightness.



The light turns on at full or dims to maintain the lux level. The light output regulates according to the level of natural light available.



The light dims to stand-by period after hold-time and stays on selected minimum dimming level.



The light switches off completely after the stand-by period.

Setting on this demonstration:

BRIGHTNESS:100%

SENSITIVITY:100%

HOLD TIME:30MIN

DAYLIGHT SENSOR: 

STAND BY DIM: 30%

STAND BY TIME: 1MIN